



Name _____ Class _____ Date _____

To show possession, add 's to the end of the first noun. If the noun is plural, the apostrophe goes AFTER the s. Cut out the cards. Which spelling is correct? Separate them into 2 piles: correct, incorrect.

Jerry's laptop



Jerrys' laptop



PREVIEW

Please [Sign In](#) or [Sign Up](#) to download the printable version of this worksheet

Gail's phone



Gails' phone

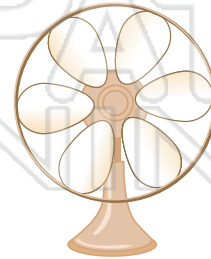
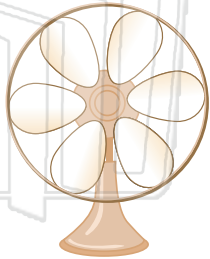




Name _____ Class _____ Date _____

To show possession, add 's to the end of the first noun. If the noun is plural, the apostrophe goes AFTER the s. Cut out the cards. Which spelling is correct? Separate them into 2 piles: correct, incorrect.

the fan's blades the fans' blades



fir



S

PREVIEW

Please [Sign In](#) or [Sign Up](#) to download the printable version of this worksheet

W

our car's horn

our cars' horn





Name _____ Class _____ Date _____

To show possession, add 's to the end of the first noun. If the noun is plural, the apostrophe goes AFTER the s. Cut out the cards. Which spelling is correct? Separate them into 2 piles: correct, incorrect.

children's toys



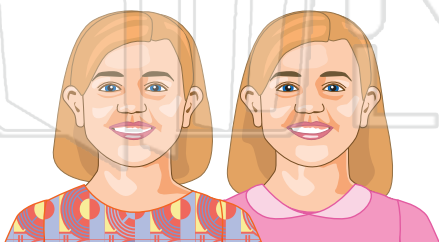
childrens' toys



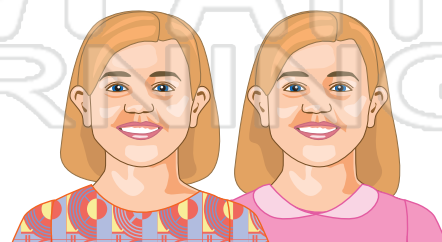
PREVIEW

Please [Sign In](#) or [Sign Up](#) to download the printable version of this worksheet

the girl's faces



the girls' faces

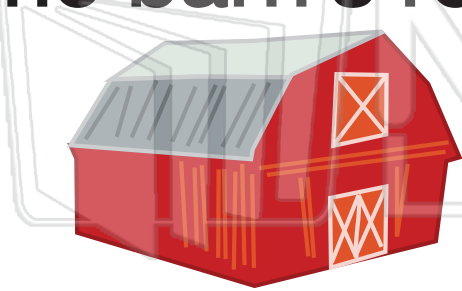




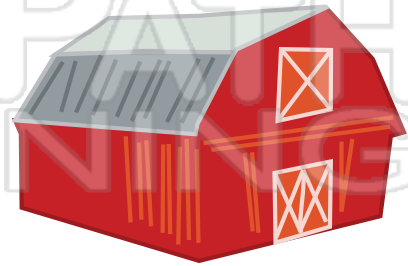
Name _____ Class _____ Date _____

To show possession, add 's to the end of the first noun. If the noun is plural, the apostrophe goes AFTER the s. Cut out the cards. Which spelling is correct? Separate them into 2 piles: correct, incorrect.

the barn's roof



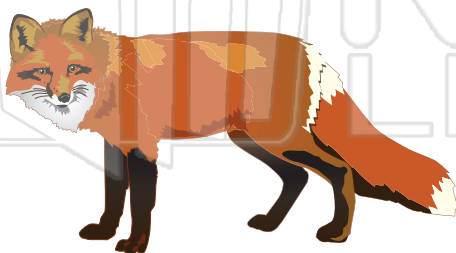
the barns' roof



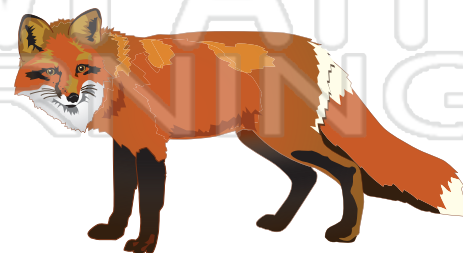
PREVIEW

Please [Sign In](#) or [Sign Up](#) to download the printable version of this worksheet

the foxes' tail



the fox's tail

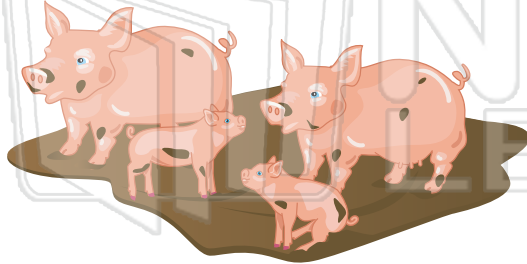




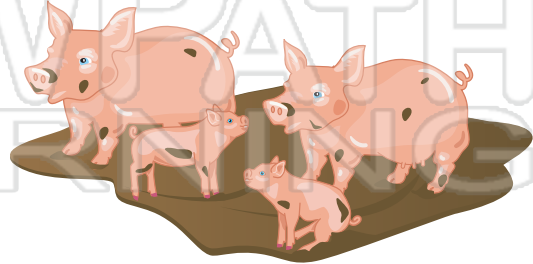
Name _____ Class _____ Date _____

To show possession, add 's to the end of the first noun. If the noun is plural, the apostrophe goes AFTER the s. Cut out the cards. Which spelling is correct? Separate them into 2 piles: correct, incorrect.

the pig's mud



the pigs' mud



PREVIEW

Please [Sign In](#) or [Sign Up](#) to download the printable version of this worksheet

the boy's crutches



the boys' crutches





Name _____ Class _____ Date _____

To show possession, add 's to the end of the first noun. If the noun is plural, the apostrophe goes AFTER the s. Cut out the cards. Which spelling is correct? Separate them into 2 piles: correct, incorrect.

the dog's bone



the dogs' bone



PREVIEW

Please [Sign In](#) or [Sign Up](#) to download the printable version of this worksheet

his bikes' tires



his bike's tires

