



Name _____ Class _____ Date _____

Flower Structure

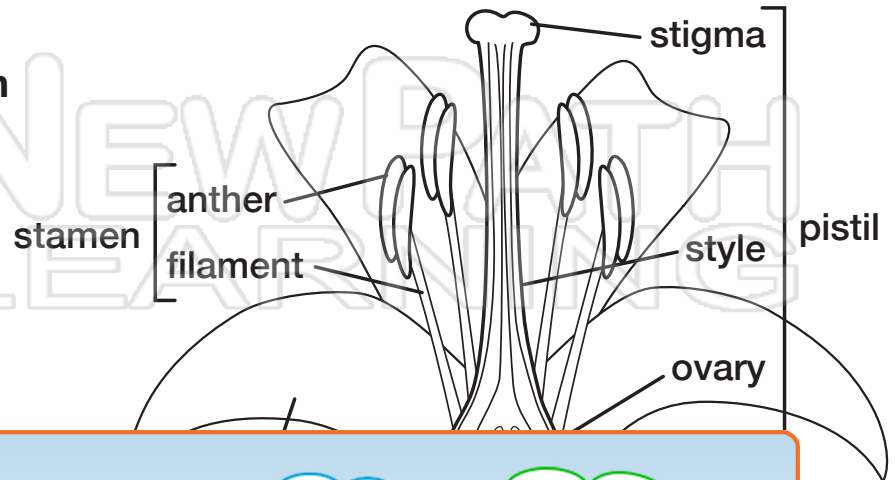
The **flower** is where the flower produces **seeds**. The **petals** of a flower are often bright and colorful which aids in **pollination** by attracting insects and animals to the flower.

The **stamen** is the male organ of a flower and includes the anther and filament.

The **anther** contains **pollen** that is a necessary for plant reproduction.

The **pistil** is the female organ of a flower and includes the

stigma
contains
into s



In ord
anim

Once
land
polle
from
throu
to the

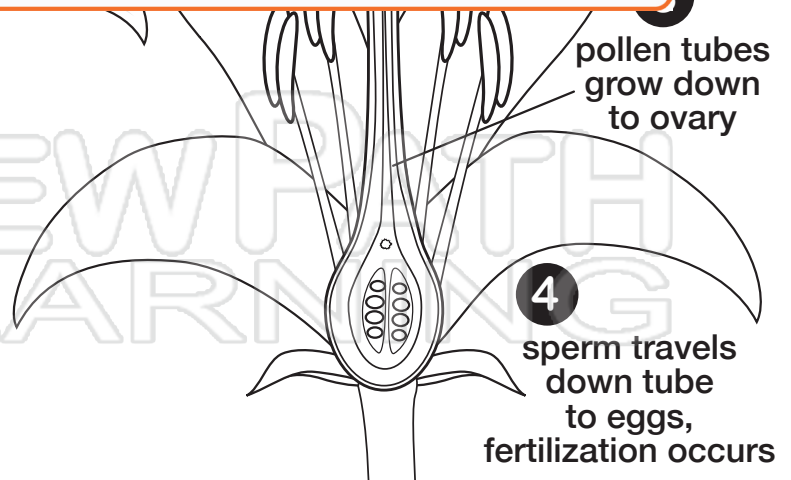


sects,

PREVIEW

Please [Sign In](#) or [Sign Up](#) to download the printable version of this worksheet

Sperm cells from the pollen travel through the pollen tubes to join the **egg cells** in the ovary of the flower. The joining of an egg cell with a sperm cell is called **fertilization**, which results in forming a **seed**.





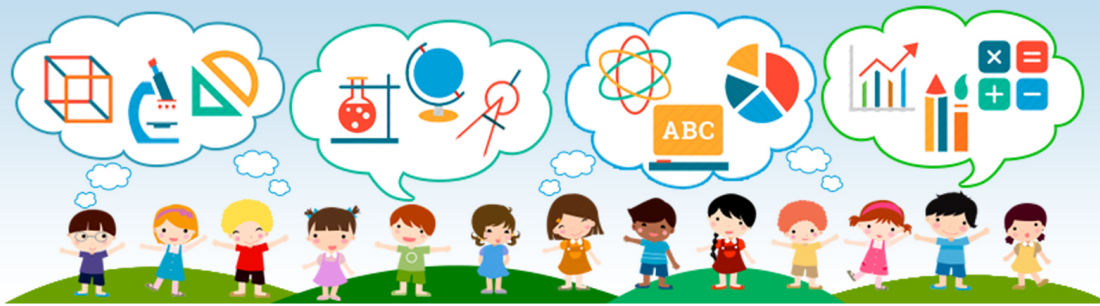
Name _____ Class _____ Date _____

Structure of a Seed

The outer layer of a seed is the **seed coat** which provides protection. An **embryo** is inside the seed; it's a new plant ready to germinate. The **endosperm** is stored food for the new plant.



seed



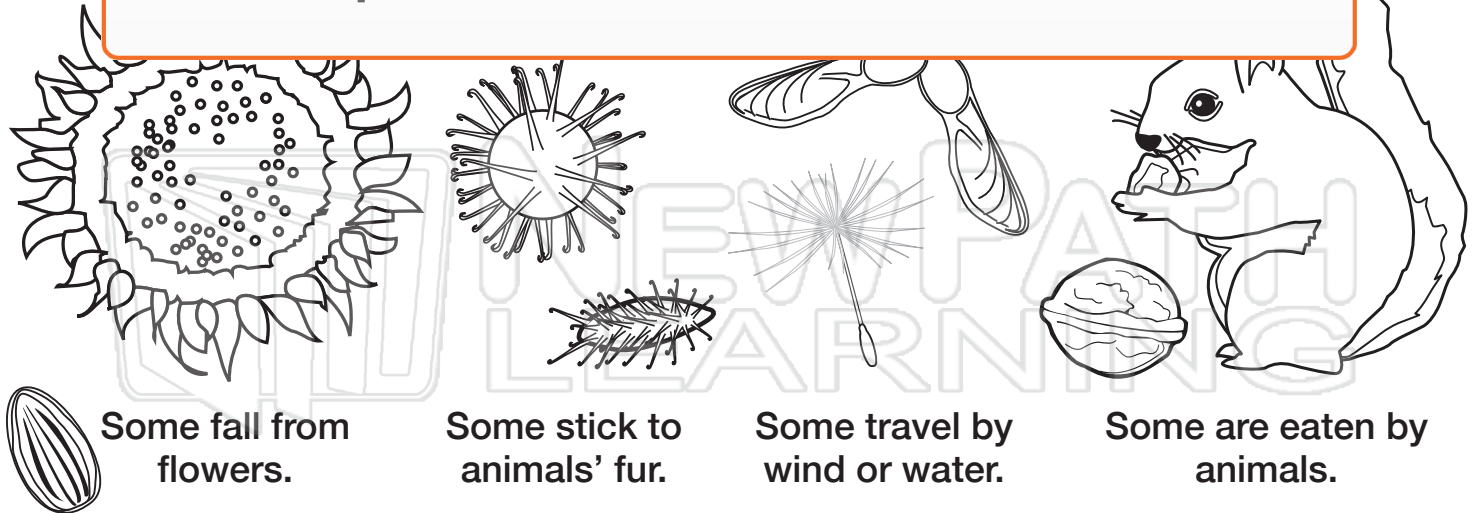
erm
ons)

Seed
the p
dispe
eater

PREVIEW

Please [Sign In](#) or [Sign Up](#) to download the printable version of this worksheet

from
e
s are
ste.



Some fall from flowers.

Some stick to animals' fur.

Some travel by wind or water.

Some are eaten by animals.



Name _____ Class _____ Date _____

Label the flower parts and describe them.



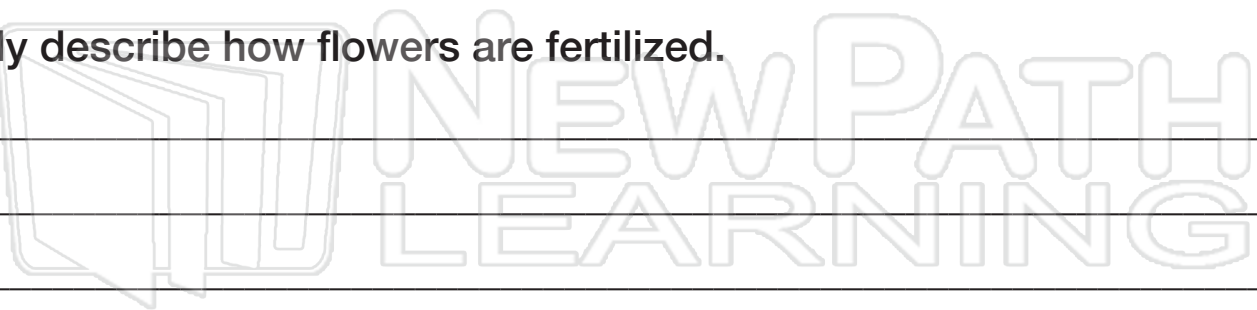
PREVIEW

Please [Sign In](#) or [Sign Up](#) to download the printable version of this worksheet

Stam

Pistil

Briefly describe how flowers are fertilized.





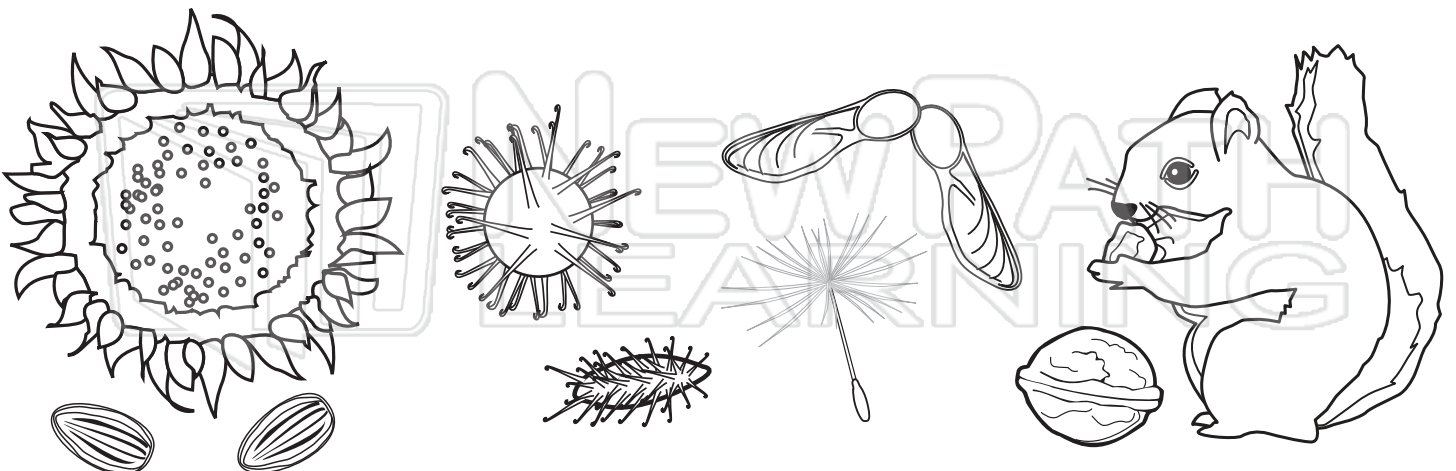
Name _____ Class _____ Date _____

Label the seed parts and describe them.



PREVIEW

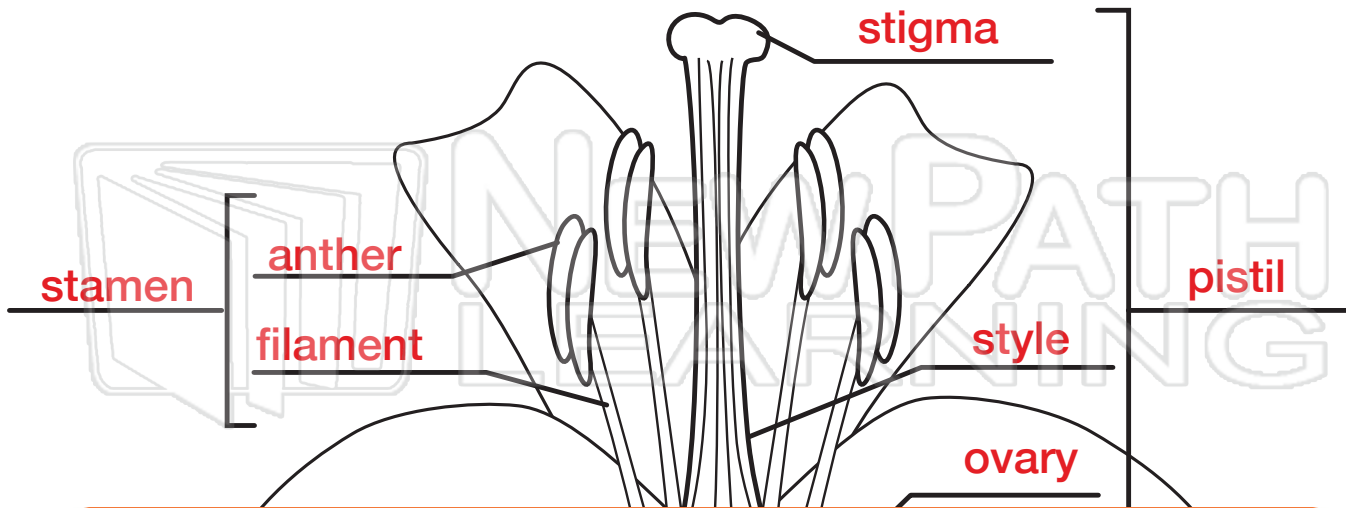
Please [Sign In](#) or [Sign Up](#) to download the printable version of this worksheet





Answer Key

Label the flower parts and describe them.



PREVIEW

Please [Sign In](#) or [Sign Up](#) to download the printable version of this worksheet

Stam

antl

Pistil

style and ovary. Eggs in the ovary develop into seeds.

Briefly describe how flowers are fertilized.

Pollen grains from stamen land on a pistil, pollen tubes grow from the pollen through the pistil to the ovary. Sperm cells from the pollen travel through the pollen tubes to join the egg cells in the ovary of the flower.

The egg cell joins with a sperm cell which results in forming a seed.



Answer Key

Label the seed parts and describe them.

Embryo - tiny
plant that grows
into an adult
plant after it
germinates



Endosperm -
stored food to
feed the plant
when it starts to
grow

Seed coat -
protects the
embryo



PREVIEW

Please [Sign In](#) or [Sign Up](#) to download
the printable version of this worksheet

