



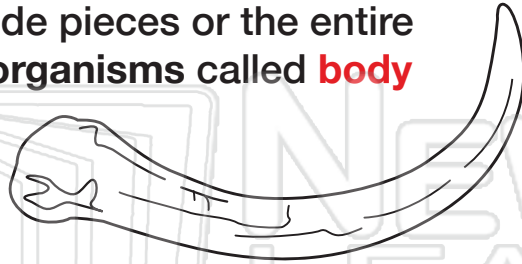
Fossils

Name _____ Class _____ Date _____

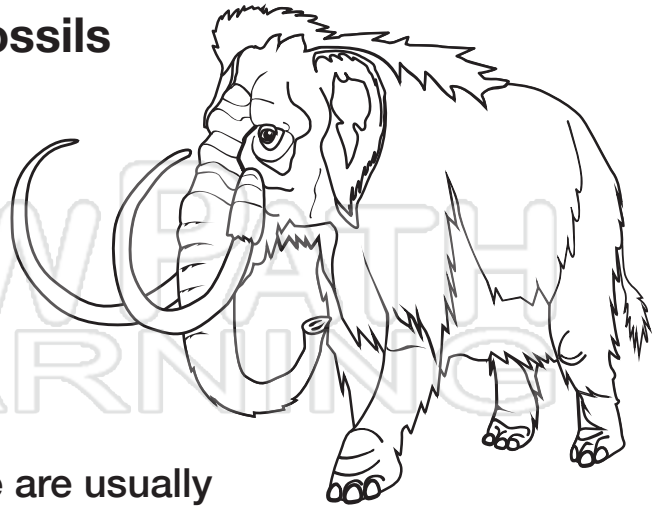
A **fossil** is any naturally preserved **evidence of life** which existed long ago.

Types of Fossils

Fossils include pieces or the entire remains of organisms called **body fossils**.



mammoth tusk



trilobite

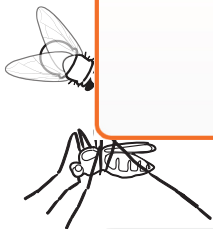
Fossils found in limestone are usually formed by a process called **diagenesis**.

Plant fossils are preserved in **carboniferous** rocks. The leaves are preserved but the stems are not.



PREVIEW

Please [Sign In](#) or [Sign Up](#) to download the printable version of this worksheet

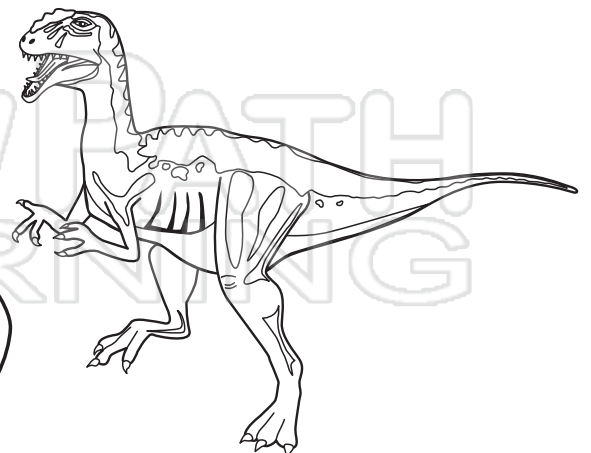


amber

Trace fossils, such as a preserved footprint, provide evidence of the activities and body characteristics of an ancient organism.



dinosaur footprint





Fossils

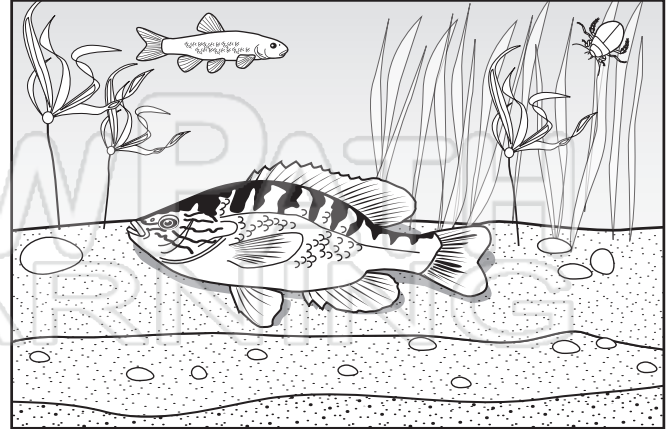
Name _____ Class _____ Date _____

How a Fossil Forms

Most **fossils** form from organisms that once lived near bodies of water, such as ponds, lakes and shallow seas.

Phase 1 – Death

After an organism dies, it slowly sinks to the sea floor.



Phase 2 – Burial

The seabed covers the organism.



PREVIEW

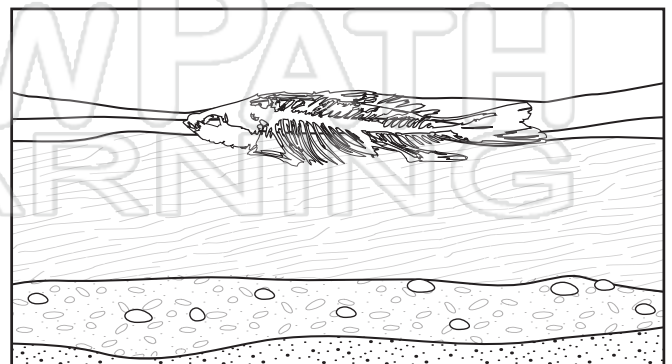
Phase 3 – Preservation

Over millions of years, the seabed hardens and the organism is preserved as a fossil.

Please [Sign In](#) or [Sign Up](#) to download the printable version of this worksheet

Phase 4 – Erosion

Millions of years later, the movement of the Earth's plates forces the seabed to move above the surface. This layer is worn away by wind and rain, exposing the fossil.

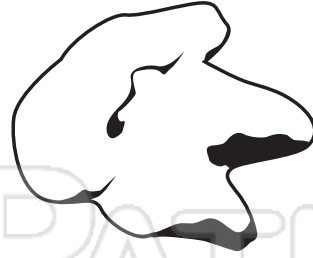
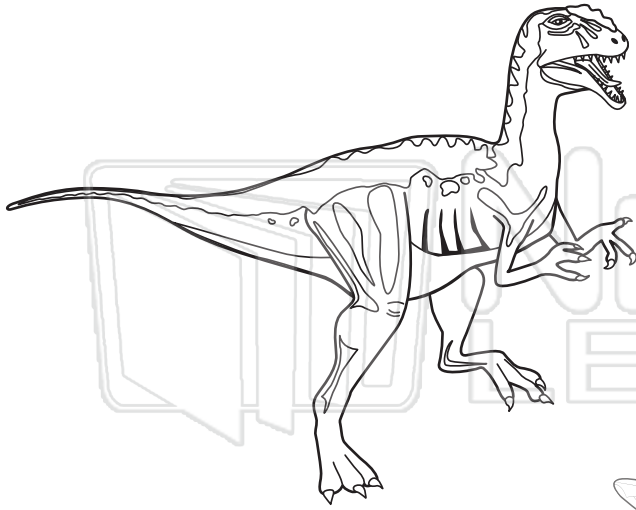




Fossils

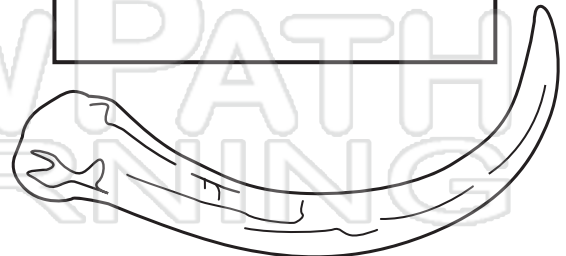
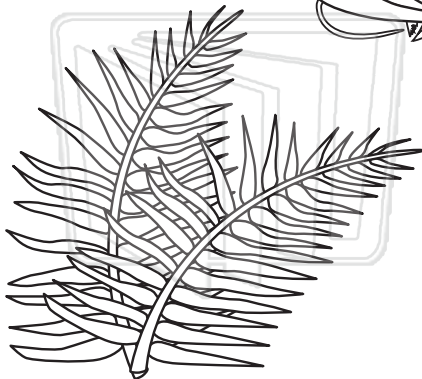
Name _____ Class _____ Date _____

Match the fossil to the organism. Write the name of the **type of fossil**.



PREVIEW

Please [Sign In](#) or [Sign Up](#) to download the printable version of this worksheet



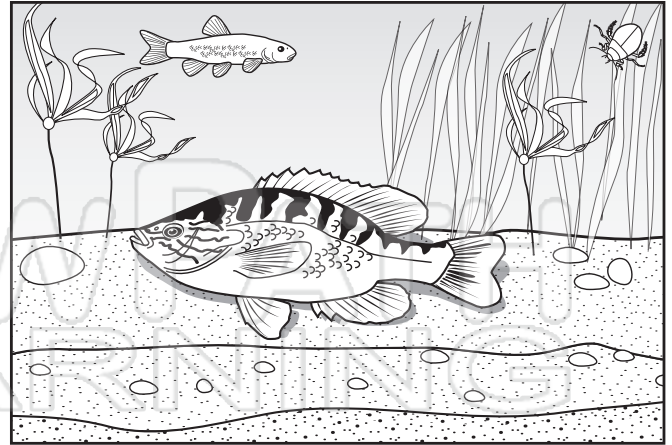


Fossils

Name _____ Class _____ Date _____

Describe each step in the **formation of a fossil**.

Phase 1 -



Phase 2 -



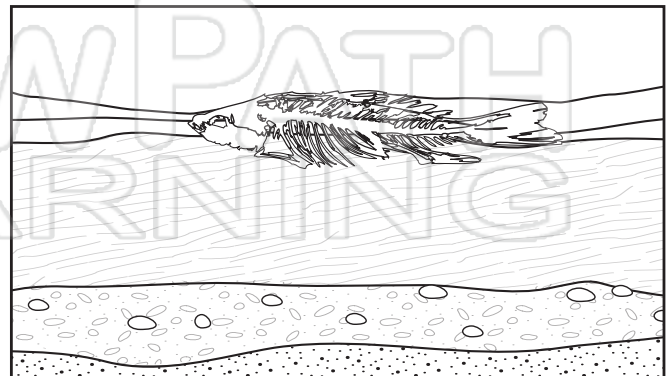
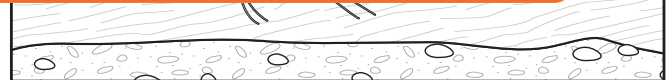
Phase

NEW PATH LEARNING

PREVIEW

Please [Sign In](#) or [Sign Up](#) to download the printable version of this worksheet

Phase 4 -

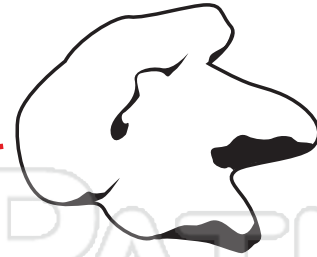
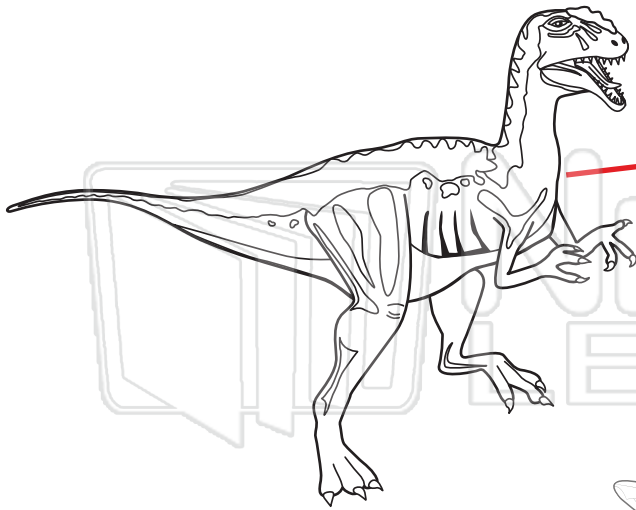




Fossils

Answer Key

Match the fossil to the organism. Write the name of the **type of fossil**.



trace fossil

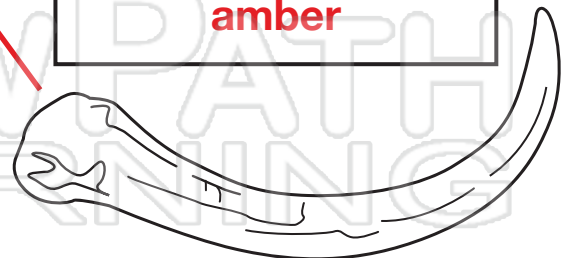
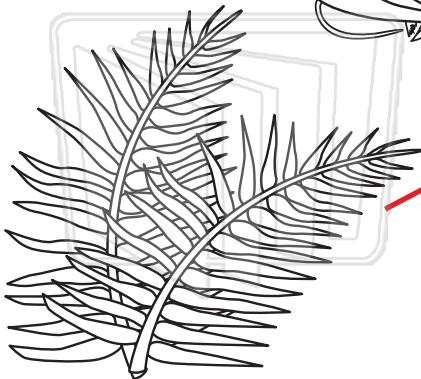


PREVIEW

Please [Sign In](#) or [Sign Up](#) to download the printable version of this worksheet



amber



body fossil



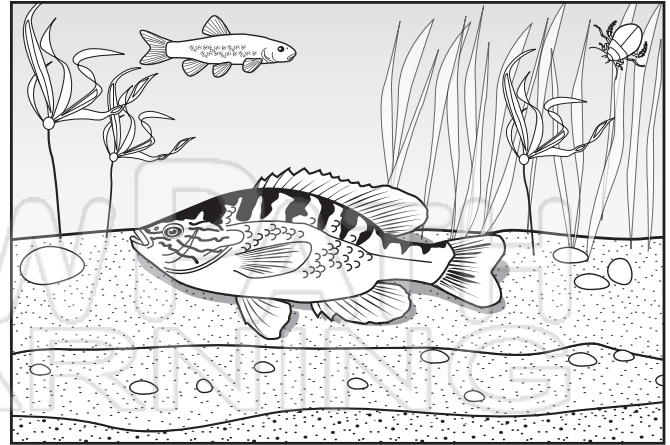
Fossils

Answer Key

Describe each step in the formation of a fossil.

Phase 1 – **Death**

After an organism dies, it sinks to the sea floor.



Phase 2 – **Deposition**

The sea floor is covered with layers of sediment.



Phase 3 – **Over time, the sediment layers are compacted and cemented together, forming rock.**

PREVIEW

Please [Sign In](#) or [Sign Up](#) to download the printable version of this worksheet

Phase 4 – **Erosion**

Millions of years later, movement of Earth's plates forces the seabed to move above the surface. This layer is worn away by wind and rain, exposing the fossil.

