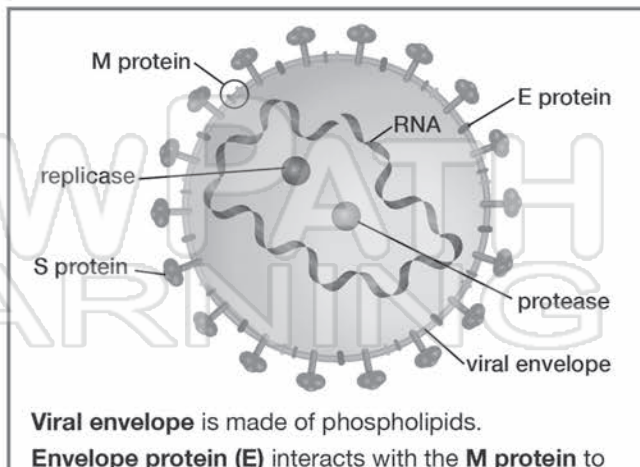
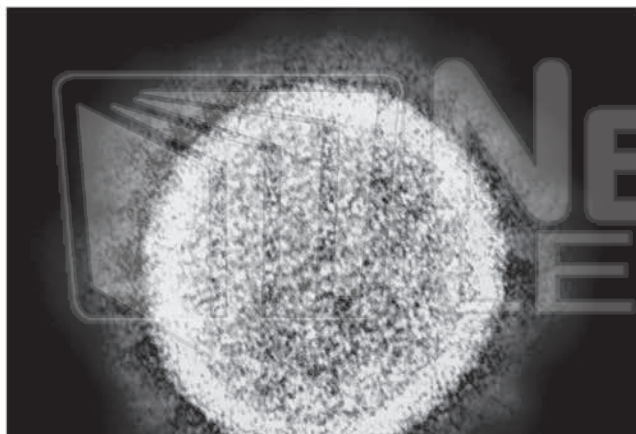




Name \_\_\_\_\_ Class \_\_\_\_\_ Date \_\_\_\_\_

## What is a Coronavirus?

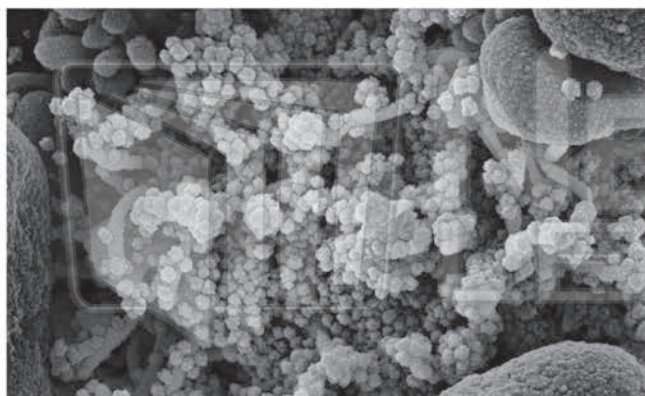
**Coronaviruses** are a large family of viruses, most of which circulate among animals. Sometimes viruses jump to humans and can cause disease. A novel coronavirus, **SARS-CoV-2**, first identified in Wuhan, China caused a global outbreak of the disease named **COVID-19**.



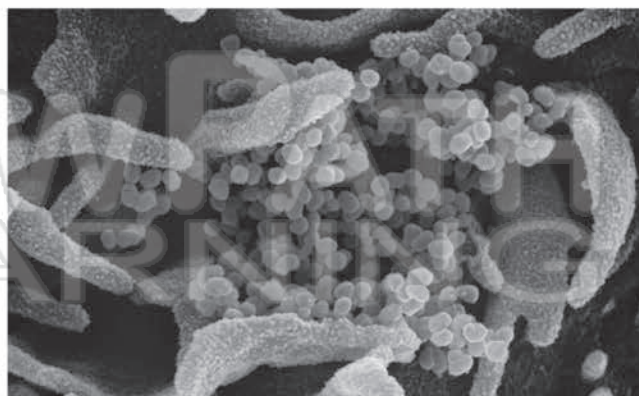
## PREVIEW

Please [Sign In](#) or [Sign Up](#) to download the printable version of this worksheet

Colorized scanning electron micrograph of a cell (blue) heavily infected with SARS-COV-2 virus particles (yellow).



Colorized scanning electron micrograph of SARS-CoV-2 (red) emerging from the surface of cells (green).



Colorized scanning electron micrograph of a cell (blue) heavily infected with SARS-COV-2 virus particles (yellow).

Colorized scanning electron micrograph of SARS-CoV-2 (red) emerging from the surface of cells (green).



Name \_\_\_\_\_ Class \_\_\_\_\_ Date \_\_\_\_\_

## What is a Coronavirus?

\_\_\_\_\_

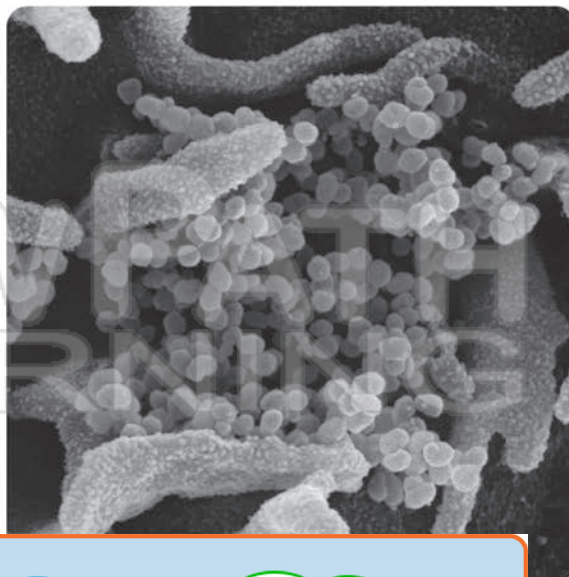
\_\_\_\_\_

\_\_\_\_\_

\_\_\_\_\_

\_\_\_\_\_

\_\_\_\_\_



## PREVIEW

Please [Sign In](#) or [Sign Up](#) to download the printable version of this worksheet

Viral envelope \_\_\_\_\_

Envelope protein (E) \_\_\_\_\_

Membrane protein (M) \_\_\_\_\_

Spike protein (S) \_\_\_\_\_

Viral genome \_\_\_\_\_