

TIME

What Is Time?

- Time is a way to measure days, nights, and events.
- Time is made up of seconds, minutes, and hours.
- An analog clock is a clock with the numbers 1 through 12 around in a circle.
- On an analog clock there are two hands.
- The shorter hand is called the **hour hand**. This hand points to



•

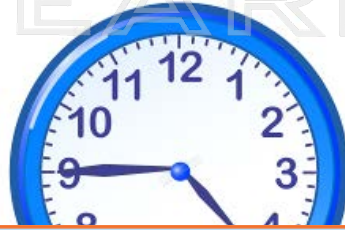
•

PREVIEW

Please [Sign In](#) or [Sign Up](#) to download the printable version of this worksheet

How to tell time:

- To tell time, you look at the number the hour hand is pointing to. This hand may be between numbers depending on where the minute hand is. When the hour hand is between numbers, you use the number that comes first. For example:



Since
the



y

ute

PREVIEW

Please [Sign In](#) or [Sign Up](#) to download the printable version of this worksheet



You already know the hour is 4. The minute hand is pointing to the 9. If you count by fives all the way around to the 9, you will come up with 45. The time shown is 4:45.

Try This!

- Write the time shown on each clock.



A banner featuring a row of ten diverse children standing on a green grassy field. Above them are five thought bubbles containing various educational icons: a cube, a microscope, a protractor, a globe, a chemistry flask, a DNA helix, a pie chart, a bar graph, and a calculator. The word 'PREVIEW' is written in large, bold, blue and orange letters in the center of the banner.

Please [Sign In](#) or [Sign Up](#) to download the printable version of this worksheet

