

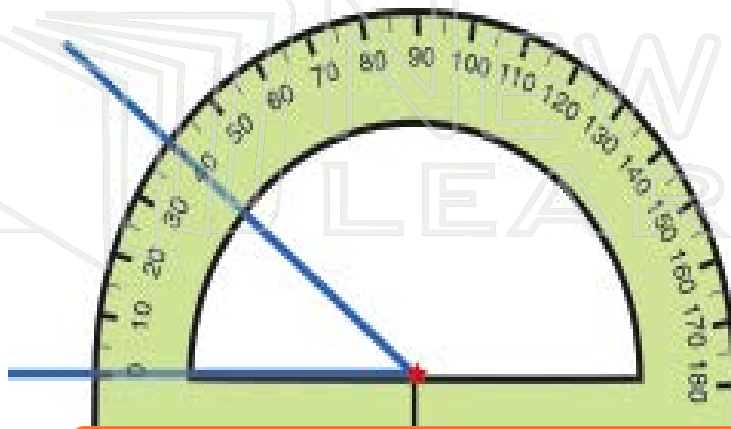
MEASURING angles using a protractor:

1. Look at the straight edge of protractor: locate the hole that is in the CENTER of that edge.
2. Locate the point (vertex) of the angle you are measuring. Line up that point (vertex) inside the hole of the protractor.



3. 

4. Then, find the point where the second side of the angle crosses over the curved part of protractor.



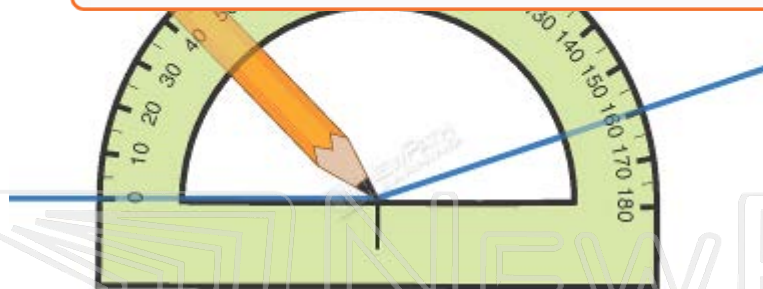
5.



Let

PREVIEW

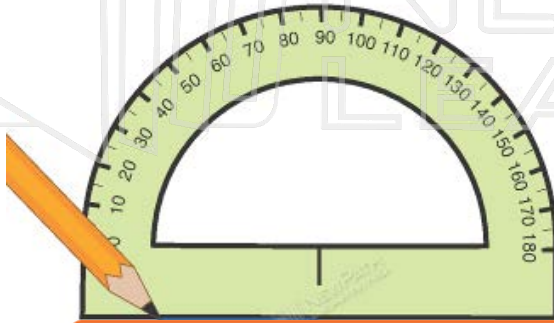
Please [Sign In](#) or [Sign Up](#) to download the printable version of this worksheet



This **obtuse angle** measures **160°**.

DRAWING angles using a protractor:

1. Place the protractor on a piece of paper. Using the straight edge of the protractor, draw a straight line, this will be one side of your angle.



- 2.

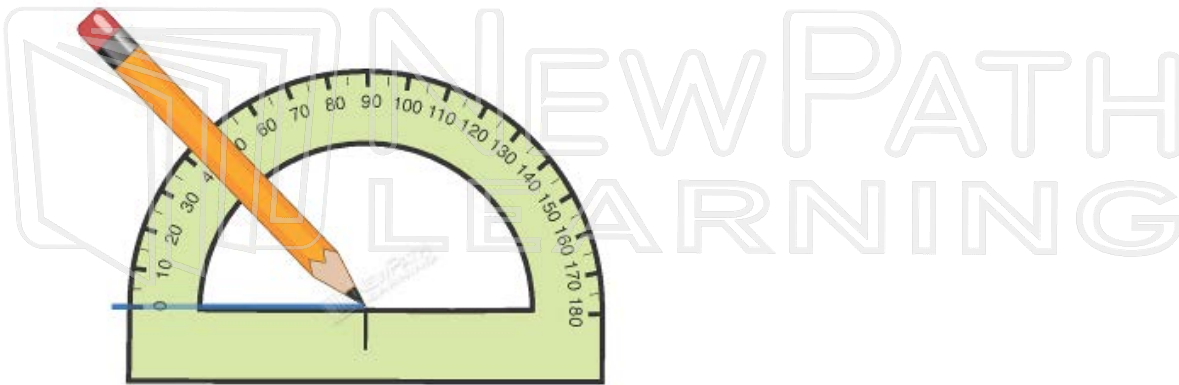


or.
and

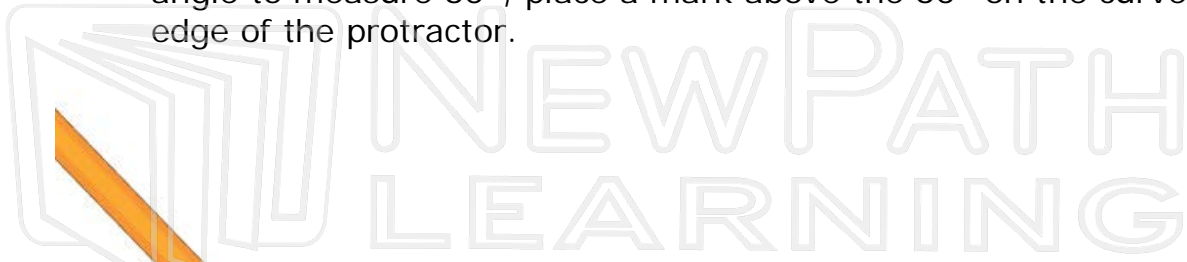
PREVIEW

Please [Sign In](#) or [Sign Up](#) to download the printable version of this worksheet

3. Line up the 0 on the straight edge of the protractor with the line you drew.



4. Find the desired measurement (degree) you would like your angle to be on the curved edge of the protractor and make a MARK above that measurement. *Example:* if you want your angle to measure 60° , place a mark above the 60° on the curved edge of the protractor.



5.



ave

PREVIEW

Please [Sign In](#) or [Sign Up](#) to download the printable version of this worksheet

