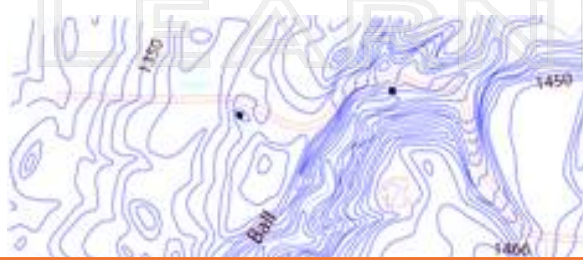


LANDFORMS, ROCKS, AND SOIL

Use a Special Map

When you want to see and understand landforms, the best type of map is a **topographic map**. A topographic map shows many features of the landscape, such as water, roads, and landmarks, but also uses contour lines to represent precisely the size, shape, and elevation of the land's features.



PREVIEW

What

Landform
mountain
map of an area shows them all:

Please [Sign In](#) or [Sign Up](#) to download the printable version of this worksheet

Now let's review the basics—the things many landforms are made of – soil and rocks.

Lesson Checkpoint:
What is a topographic map?

Life-Giving Soil

Soil is the loose material that covers much of the Earth's surface. There are three main layers of soil, starting from the top: **topsoil**, which is the soil we walk around on and the soil in which the plants and trees grow, **subsoil**, and even deeper below is **bedrock**.

What about Rocks?

Rocks are made up of many tiny pieces of minerals. **Minerals** are natural, nonliving crystals that make up rocks.

Types of rocks:

Igneous rocks form when melted rock cools down and then hardens again. During the cooling stage, crystals form.

Sedimentary rocks form when layers of rock settle on top of each other and then harden together.

Metamorphic rocks form when solid rocks are pressed together and heated; the extreme heat can change the properties of the rocks being squeezed together.

Lesson Checkpoint:

Name one type of rock and how it's formed

The R

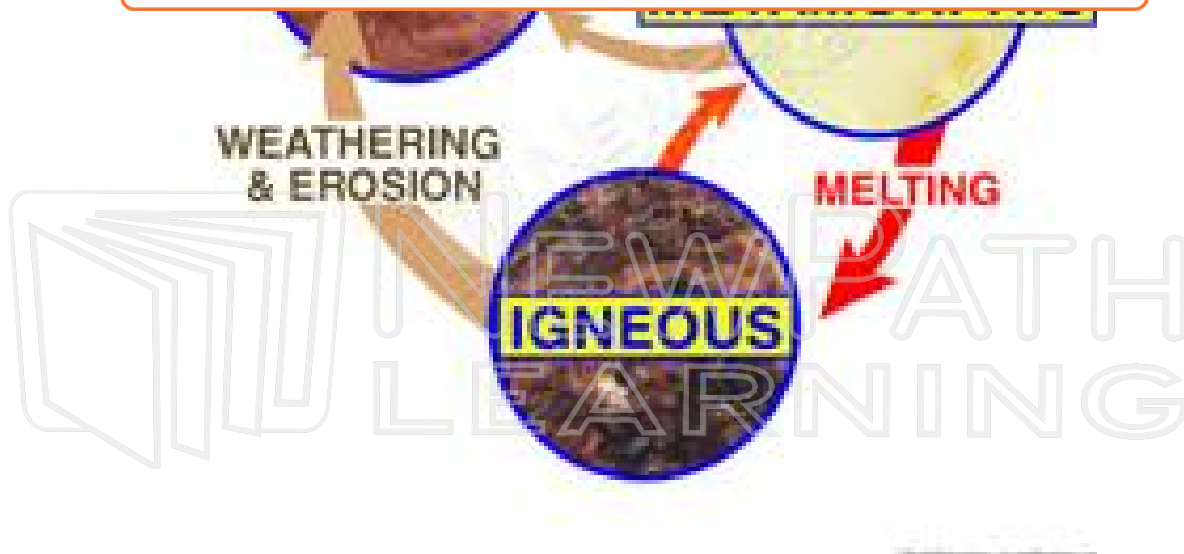
The roc
over lo
back at



forms
r and

PREVIEW

Please [Sign In](#) or [Sign Up](#) to download the printable version of this worksheet



Weathering and Erosion

Erosion is the wearing away of the earth's surface by rain, wind, snow, and ice. There are two kinds of erosion: **mechanical weathering** is the breaking of rock into small pieces because of such things like gravity, wind, rain, and ice. **Chemical weathering** is the changing of material in a rock through a chemical process.

Erosion can occur quickly, as in a landslide, or can happen slowly, as in a slow moving river. When water moves, in rivers, ocean currents, tides, and floods, it moves particles of soil and rock from one spot to another.

Rain causes erosion too! Rain can move soil downhill off of fields. Farmers obviously need soil to grow crops, so they try and do what they can to stop the erosion of their fields. Farmers plow across fields to do this. The spaces created by plow catch rainwater to keep it from rolling off of their fields and taking



PREVIEW

Please [Sign In](#) or [Sign Up](#) to download the printable version of this worksheet

Depos

Depos

that wa

longer

fall to t

Pieces

all

it no

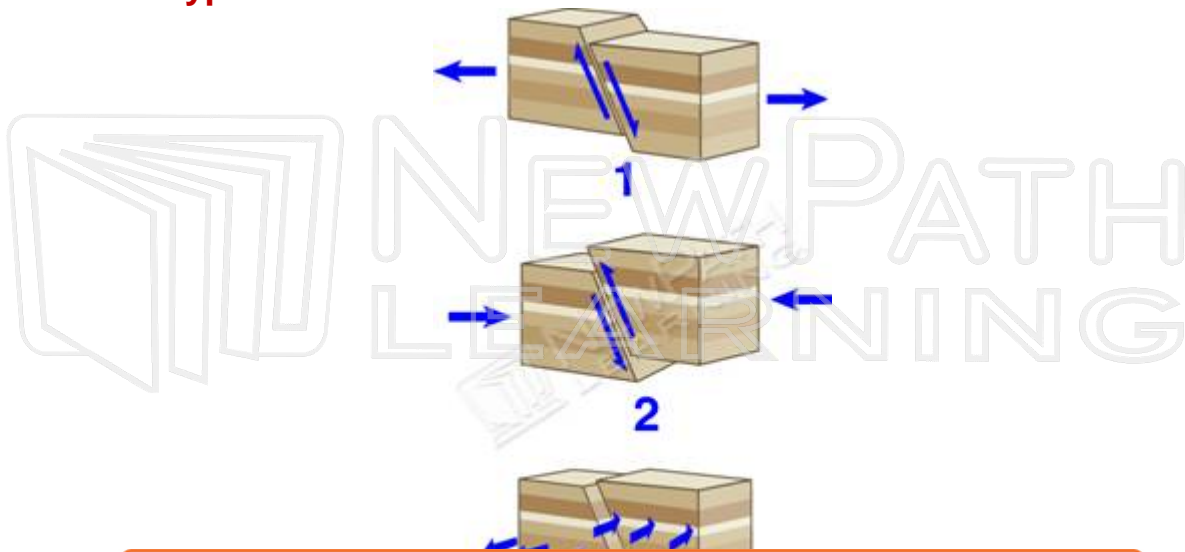
s to

Faults

Faults are rock fractures or cracks in the Earth's crust which are caused by the movement or shifting of the Earth's surface.



Different types of faults:



#1 The
#2 The
#3 The

Plate

We know
outer core
the top
the Earth
Earth.
the mantle
ocean are called **oceanic plates** and the plates under land are called **continental plates**.



PREVIEW

Please [Sign In](#) or [Sign Up](#) to download the printable version of this worksheet

The area where one plate meets another plate is called a **boundary**. The pieces do move (very slowly of course)...they slide by, bump into, and scrape against each other. When the pieces move, they cause changes to the Earth. Slow changes caused by plate movements can occur over long periods of time, such as the formation of mountains. Plate movements can also cause **RAPID** changes to the earth....think **EARTHQUAKE!**

How Do Earthquakes Happen?

Earthquakes usually occur where two plates bump into each other. What most often happens to cause an earthquake is that two plates bump into each other and their edges get stuck together but the rest of the plates keeps moving. Soon the plate edges finally unstuck and an earthquake occurs due to the energy released as the plates unstick. This energy shoots out in all directions causing seismic waves to shake the ground as the waves move to the Earth's surface.

The spot on the Earth's surface directly above where an earthquake occurs is called the **epicenter**.

*Lesson Checkpoint:
Explain how earthquakes occur*

Volca
A **volca**
gases e

Under
chamb
are cha
magma
magma
bubble
through
erupt.
lava.)



PREVIEW

Please [Sign In](#) or [Sign Up](#) to download the printable version of this worksheet

and

. As
the
n the
ed
no to
ed



*Lesson Checkpoint:
What causes volcanoes to erupt?*