



Name _____ Class _____ Date _____

Match each of the following terms to its definition:

Vacuole

Tissue

Solvent

Semipermeable

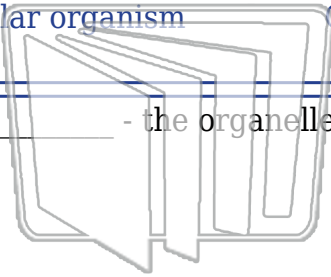
Unicellular organism

Chromatin

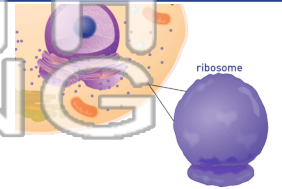
Solute

Ribosomes

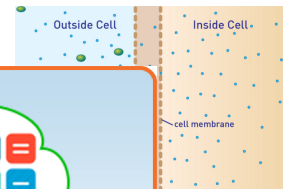
1. _____ - the organelles that produce proteins needed by the cell



NEW PATH LEARNING



2. _____ - selectively permeable; allowing select materials to pass through while keeping others out, as through a cell membrane



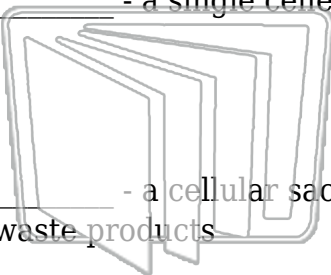
3. _____
example,
solvent



4. _____
form a so
the suga

PREVIEW
Please [Sign In](#) or [Sign Up](#) to download
the printable version of this worksheet

6. _____ - a single celled organism; an organism made up of only one cell

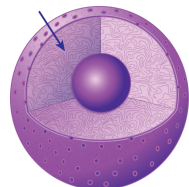


NEW PATH LEARNING

7. _____ - a cellular sac that contains water and stores nutrients and cellular waste products



8. _____ - the genetic material in a cell's nucleus that contains DNA and carries genetic information for directing the cell functions





Name _____ Class _____ Date _____

Match each of the following terms to its definition:

Vacuole

Tissue

Solvent

Semipermeable

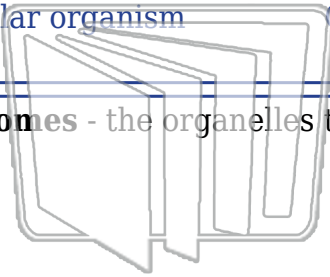
Unicellular organism

Chromatin

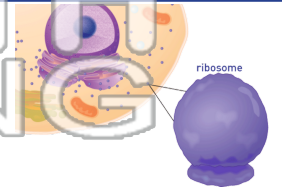
Solute

Ribosomes

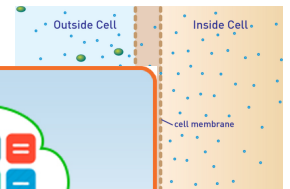
1. **ribosomes** - the organelles that produce proteins needed by the cell



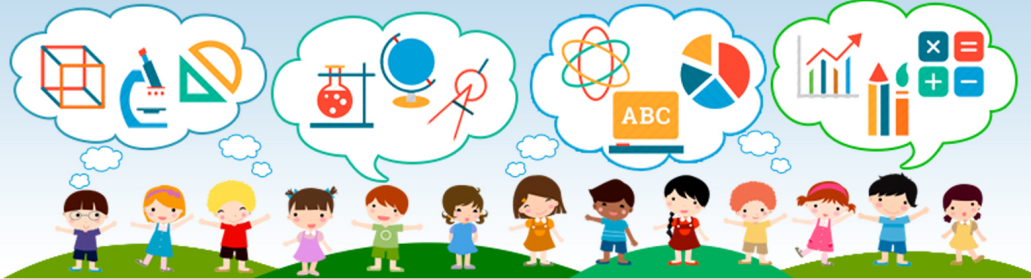
NEW PATH LEARNING



2. **semipermeable** - selectively permeable; allowing select materials to pass through while keeping others out, as through a cell membrane



3. **solute**
example,
solvent

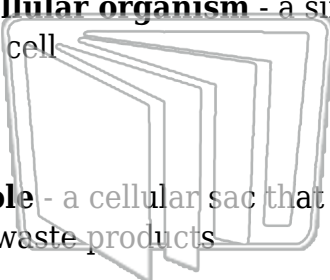


4. **solvent**
solution;
sugar is

5. **tissue**
similar c

PREVIEW
Please [Sign In](#) or [Sign Up](#) to download
the printable version of this worksheet

6. **unicellular organism** - a single celled organism; an organism made up of only one cell



NEW PATH LEARNING

7. **vacuole** - a cellular sac that contains water and stores nutrients and cellular waste products



8. **chromatin** - the genetic material in a cell's nucleus that contains DNA and carries genetic information for directing the cell functions

