



Name _____ Class _____ Date _____

Match each of the following terms to its definition:

Genetic code

Genetics

Crossing-over

Gene

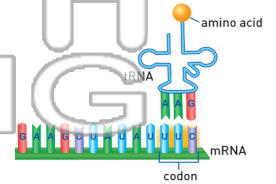
Codon

Double helix

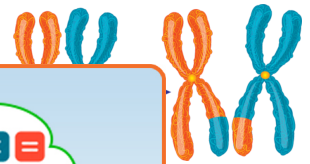
Dominant allele

Fertilization

1. _____ - sequence of three nucleotides on messenger RNA that code for the production of a specific amino acid



2. _____ - the exchange of DNA segments between homologous chromosomes; occurs in prophase I of meiosis

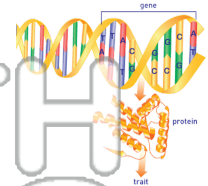


3. _____
4. _____
5. _____ develops combinir

PREVIEW

Please [Sign In](#) or [Sign Up](#) to download the printable version of this worksheet

6. _____ - the sequence of DNA that codes for a specific trait

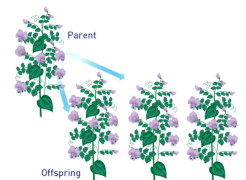


7. _____ - the correspondence between RNA triplets and specific amino acids that are used to form a particular protein

The Genetic Code

	T	C	A	G
U	Phenylalanine	Proline	Alanine	Cysteine
C	Leucine	Proline	Alanine	Cysteine
A	Alanine	Threonine	Asparagine	Serine
G	Valine	Alanine	Aspartic acid	Glycine
U	Phenylalanine	Proline	Alanine	Cysteine
C	Leucine	Proline	Alanine	Cysteine
A	Alanine	Threonine	Asparagine	Serine
G	Valine	Alanine	Aspartic acid	Glycine
U	Phenylalanine	Proline	Alanine	Cysteine
C	Leucine	Proline	Alanine	Cysteine
A	Alanine	Threonine	Asparagine	Serine
G	Valine	Alanine	Aspartic acid	Glycine
U	Phenylalanine	Proline	Alanine	Cysteine
C	Leucine	Proline	Alanine	Cysteine
A	Alanine	Threonine	Asparagine	Serine
G	Valine	Alanine	Aspartic acid	Glycine
U	Phenylalanine	Proline	Alanine	Cysteine
C	Leucine	Proline	Alanine	Cysteine
A	Alanine	Threonine	Asparagine	Serine
G	Valine	Alanine	Aspartic acid	Glycine

8. _____ - the study of heredity





Name _____ Class _____ Date _____

Match each of the following terms to its definition:

Genetic code

Genetics

Crossing-over

Gene

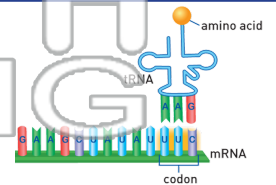
Codon

Double helix

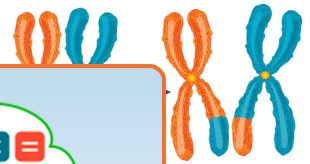
Dominant allele

Fertilization

1. **codon** - sequence of three nucleotides on messenger RNA that code for the production of a specific amino acid



2. **crossing-over** - the exchange of DNA segments between homologous chromosomes; occurs in prophase I of meiosis



3. **dominant**

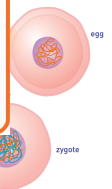


4. **double**

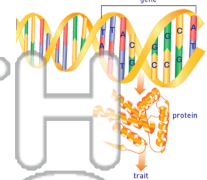


5. **fertilization** develops combined

PREVIEW
Please [Sign In](#) or [Sign Up](#) to download the printable version of this worksheet



6. **gene** - the sequence of DNA that codes for a specific trait



7. **genetic code** - the correspondence between RNA triplets and specific amino acids that are used to form a particular protein

Phenylalanine	U	C	A	G
U	Phenylalanine	Serine	Tyrosine	Cysteine
C	Leucine	Proline	Histidine	Arginine
A	Alanine	Asparagine	Serine	Cysteine
G	Glycine	Glutamic acid	Glutamine	Asparagine

8. **genetics** - the study of heredity

