



Name _____ Class _____ Date _____

Match each of the following terms to its definition:

Antibodies

Bile

Capillaries

Axial skeleton

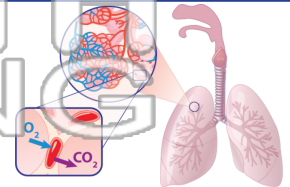
Bronchi

Alveoli

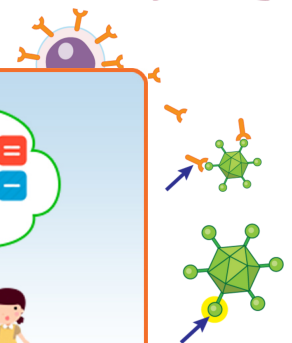
Antigen

Appendicular skeleton

1. _____ - small sacs within the lungs that specialize in the exchange of gas between the blood and air



2. _____ - a specific protein produced by B lymphocytes that attaches to an antigen and leads to its removal



3. _____ the body

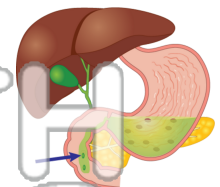


4. _____ flexible r

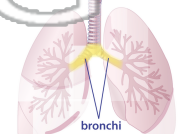
5. _____ consists

PREVIEW
Please [Sign In](#) or [Sign Up](#) to download the printable version of this worksheet

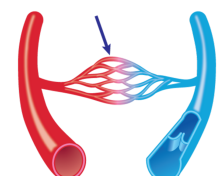
6. _____ - a chemical produced by the liver and stored temporarily in the gall bladder that is released into the intestines to help in fat digestion



7. _____ - large tubules that branch from the trachea to carry air in and out of the lungs



8. _____ - the smallest blood vessels found in very rich networks between arteries and veins; the site where many substances are exchanged





Name _____ Class _____ Date _____

Match each of the following terms to its definition:

Antibodies

Bile

Capillaries

Axial skeleton

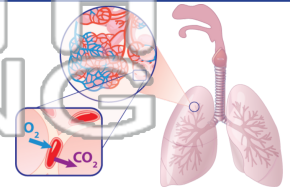
Bronchi

Alveoli

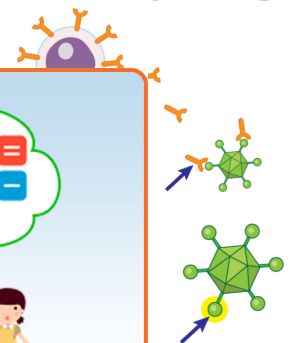
Antigen

Appendicular skeleton

1. **alveoli** - small sacs within the lungs that specialize in the exchange of gas between the blood and air



2. **antibodies** - a specific protein produced by B lymphocytes that attaches to an antigen and leads to its removal



3. **antigen** - a substance that causes the body or immune system to produce antibodies



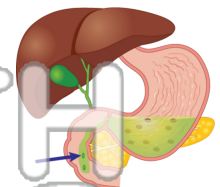
4. **appendicular skeleton** - the bones of the arms and legs



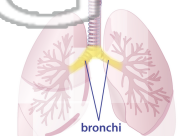
5. **axial skeleton** - the skull, spine, and ribcage

PREVIEW
Please [Sign In](#) or [Sign Up](#) to download the printable version of this worksheet

6. **bile** - a chemical produced by the liver and stored temporarily in the gall bladder that is released into the intestines to help in fat digestion



7. **bronchi** - large tubules that branch from the trachea to carry air in and out of the lungs



8. **capillaries** - the smallest blood vessels found in very rich networks between arteries and veins; the site where many substances are exchanged

