



Name \_\_\_\_\_ Class \_\_\_\_\_ Date \_\_\_\_\_

### Match each of the following terms to its definition:

Endocrine glands

Emphysema

Hormones

Epidermis

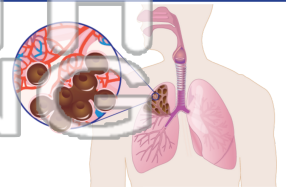
Hypertension

Fetus

Homeostasis

Esophagus

1. \_\_\_\_\_ - a disease of the lungs very common in smokers, where the air spaces enlarge to where they no longer function



2. \_\_\_\_\_ - glands found throughout the human body that act to control body functions by releasing hormones into the bloodstream



3. \_\_\_\_\_ and does cells that

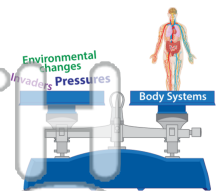


4. \_\_\_\_\_

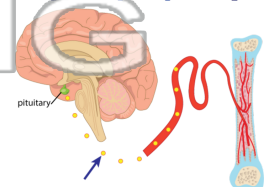
5. \_\_\_\_\_ birth; de

**PREVIEW**  
Please [Sign In](#) or [Sign Up](#) to download the printable version of this worksheet

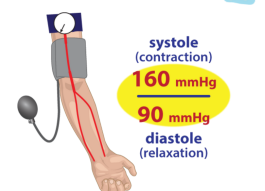
6. \_\_\_\_\_ - the tendency of a body system to maintain a stable, internal balance while faced with changes



7. \_\_\_\_\_ - chemicals released by endocrine glands that control a wide variety of functions within the human body; some have an affect on the growth and responses of an organism



8. \_\_\_\_\_ - high blood pressure (>120/80 mm/Hg) caused by unknown factors or related to a history of obesity, high fat and salt diets, stress, alcohol consumption, or smoking





Name \_\_\_\_\_ Class \_\_\_\_\_ Date \_\_\_\_\_

### Match each of the following terms to its definition:

Endocrine glands

Emphysema

Hormones

Epidermis

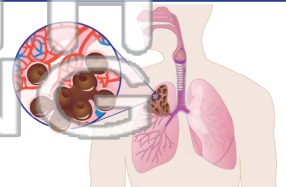
Hypertension

Fetus

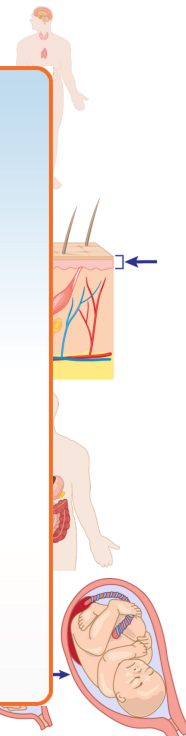
Homeostasis

Esophagus

1. **emphysema** - a disease of the lungs very common in smokers, where the air spaces enlarge to where they no longer function



2. **endocrine glands** - glands found throughout the human body that act to control body functions by releasing hormones into the bloodstream



3. **epidermis** and does cells that

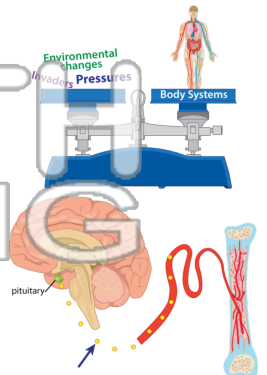


4. **esophagus**

5. **fetus** defined k

**PREVIEW**  
Please [Sign In](#) or [Sign Up](#) to download the printable version of this worksheet

6. **homeostasis** - the tendency of a body system to maintain a stable, internal balance while faced with changes



7. **hormones** - chemicals released by endocrine glands that control a wide variety of functions within the human body; some have an affect on the growth and responses of an organism

8. **hypertension** - high blood pressure (>120/80 mm/Hg) caused by unknown factors or related to a history of obesity, high fat and salt diets, stress, alcohol consumption, or smoking

