



Name \_\_\_\_\_ Class \_\_\_\_\_ Date \_\_\_\_\_

### Match each of the following terms to its definition:

Bile

Capillaries

Bronchi

Antigen

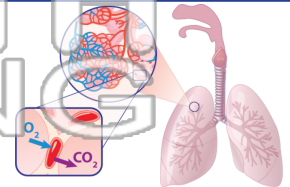
Axial skeleton

Appendicular skeleton

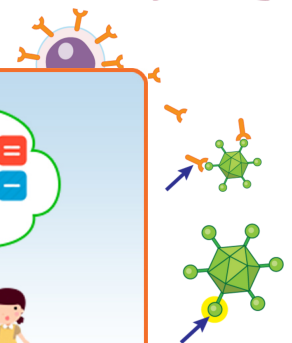
Antibodies

Alveoli

1. \_\_\_\_\_ - small sacs within the lungs that specialize in the exchange of gas between the blood and air



2. \_\_\_\_\_ - a specific protein produced by B lymphocytes that attaches to an antigen and leads to its removal



3. \_\_\_\_\_ the body

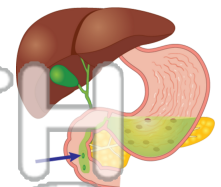


4. \_\_\_\_\_ flexible r

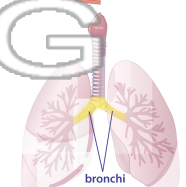
5. \_\_\_\_\_ consists

**PREVIEW**  
Please [Sign In](#) or [Sign Up](#) to download the printable version of this worksheet

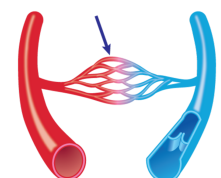
6. \_\_\_\_\_ - a chemical produced by the liver and stored temporarily in the gall bladder that is released into the intestines to help in fat digestion



7. \_\_\_\_\_ - large tubules that branch from the trachea to carry air in and out of the lungs



8. \_\_\_\_\_ - the smallest blood vessels found in very rich networks between arteries and veins; the site where many substances are exchanged





Name \_\_\_\_\_ Class \_\_\_\_\_ Date \_\_\_\_\_

### Match each of the following terms to its definition:

Bile

Capillaries

Bronchi

Antigen

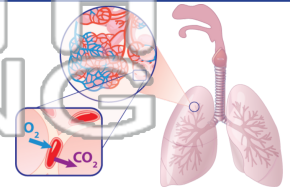
Axial skeleton

Appendicular skeleton

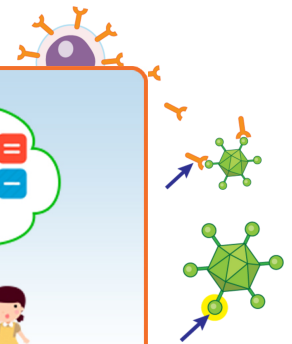
Antibodies

Alveoli

1. **alveoli** - small sacs within the lungs that specialize in the exchange of gas between the blood and air



2. **antibodies** - a specific protein produced by B lymphocytes that attaches to an antigen and leads to its removal



3. **antigen** - a substance that causes the body to produce antibodies

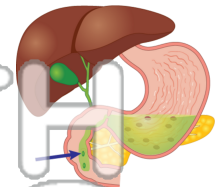


4. **appendicular skeleton** - the bones of the arms and legs

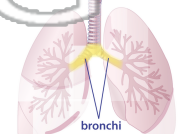
**PREVIEW**  
Please [Sign In](#) or [Sign Up](#) to download the printable version of this worksheet

5. **axial skeleton** - the skull, spine, and ribcage

6. **bile** - a chemical produced by the liver and stored temporarily in the gall bladder that is released into the intestines to help in fat digestion



7. **bronchi** - large tubules that branch from the trachea to carry air in and out of the lungs



8. **capillaries** - the smallest blood vessels found in very rich networks between arteries and veins; the site where many substances are exchanged

