



Name _____ Class _____ Date _____

Match each of the following terms to its definition:

Embryo

Emphysema

Capillaries

Cardiac muscle

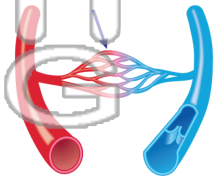
Dermis

Central nervous system

Cartilage

Complex carbohydrates

1. _____ - the smallest blood vessels found in very rich networks between arteries and veins; the site where many substances are exchanged



2. _____ - the heart muscle composed of highly specialized cells that repeatedly contract without fatigue; the muscles are striated like skeletal muscles



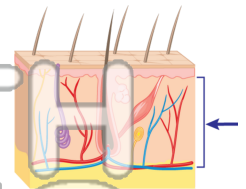
3. _____ than bone



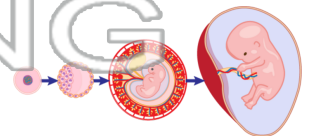
4. _____ occurs; c

5. _____ smaller u grains

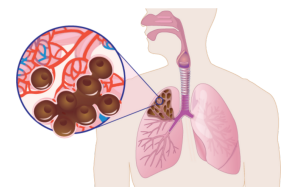
6. _____ - the inner layer of skin, just above a layer of fat, which contains nerves, blood vessels, hairs, oil glands and sweat glands



7. _____ - an organism in its earliest stage of growth, the stage of human development that spans the first eight or nine weeks of growth following fertilization and the formation of the zygote



8. _____ - a disease of the lungs very common in smokers, where the air spaces enlarge to where they no longer function



PREVIEW

Please [Sign In](#) or [Sign Up](#) to download the printable version of this worksheet



Name _____ Class _____ Date _____

Match each of the following terms to its definition:

Embryo

Emphysema

Capillaries

Cardiac muscle

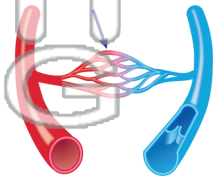
Dermis

Central nervous system

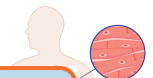
Cartilage

Complex carbohydrates

1. **capillaries** - the smallest blood vessels found in very rich networks between arteries and veins; the site where many substances are exchanged



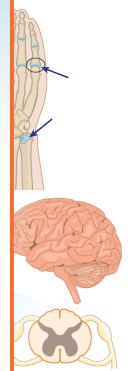
2. **cardiac muscle** - the heart muscle composed of highly specialized cells that repeatedly contract without fatigue; the muscles are striated like skeletal muscle



3. **cartilage** - a flexible, fibrous connective tissue that binds bones together and prevents friction in the joints



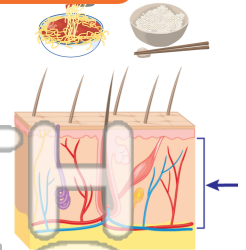
4. **central nervous system** - the part of the nervous system consisting of the brain, spinal cord, and cranial and spinal nerves



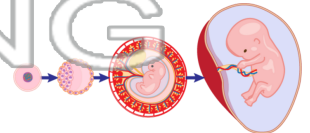
5. **complex carbohydrates** - a type of carbohydrate that is made of long chains of sugar molecules. They are found in many grains, fruits, and vegetables

PREVIEW
Please [Sign In](#) or [Sign Up](#) to download the printable version of this worksheet

6. **dermis** - the inner layer of skin, just above a layer of fat, which contains nerves, blood vessels, hairs, oil glands and sweat glands



7. **embryo** - an organism in its earliest stage of growth; the stage of human development that spans the first eight or nine weeks of growth following fertilization and the formation of the zygote



8. **emphysema** - a disease of the lungs very common in smokers, where the air spaces enlarge to where they no longer function

