



Name _____ Class _____ Date _____

Match each of the following terms to its definition:

Esophagus

Emphysema

Epidermis

Hormones

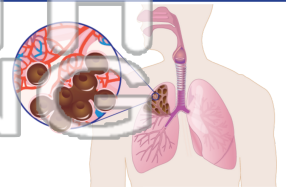
Fetus

Hypertension

Endocrine glands

Homeostasis

1. _____ - a disease of the lungs very common in smokers, where the air spaces enlarge to where they no longer function



2. _____ - glands found throughout the human body that act to control body functions by releasing hormones into the bloodstream



3. _____ and does cells that

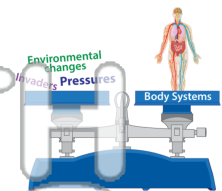


4. _____

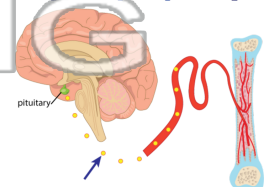
5. _____ birth; de

PREVIEW
Please [Sign In](#) or [Sign Up](#) to download the printable version of this worksheet

6. _____ - the tendency of a body system to maintain a stable, internal balance while faced with changes



7. _____ - chemicals released by endocrine glands that control a wide variety of functions within the human body; some have an affect on the growth and responses of an organism



8. _____ - high blood pressure (>120/80 mm/Hg) caused by unknown factors or related to a history of obesity, high fat and salt diets, stress, alcohol consumption, or smoking





Name _____ Class _____ Date _____

Match each of the following terms to its definition:

Esophagus

Emphysema

Epidermis

Hormones

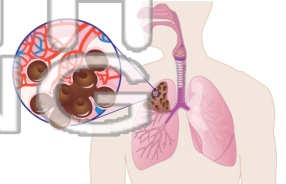
Fetus

Hypertension

Endocrine glands

Homeostasis

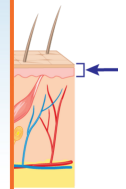
1. **emphysema** - a disease of the lungs very common in smokers, where the air spaces enlarge to where they no longer function



2. **endocrine glands** - glands found throughout the human body that act to control body functions by releasing hormones into the bloodstream



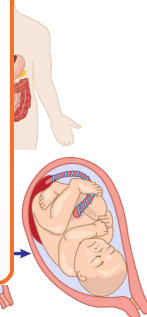
3. **epidermis** and does cells that



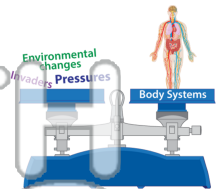
4. **esophagus**

5. **fetus** defined as

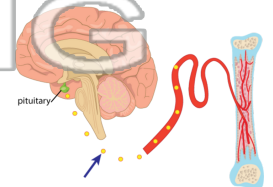
PREVIEW
Please [Sign In](#) or [Sign Up](#) to download the printable version of this worksheet



6. **homeostasis** - the tendency of a body system to maintain a stable, internal balance while faced with changes



7. **hormones** - chemicals released by endocrine glands that control a wide variety of functions within the human body; some have an affect on the growth and responses of an organism



8. **hypertension** - high blood pressure (>120/80 mm/Hg) caused by unknown factors or related to a history of obesity, high fat and salt diets, stress, alcohol consumption, or smoking

