



Name _____ Class _____ Date _____

Match each of the following terms to its definition:

Osmosis

Organ system

Nucleolus

Organ

Nuclear pores

Ribosomes

Passive transport

Organism

1. _____ - tiny openings that allow materials to pass in and out of the nucleus

2. _____ - a large cellular structure within a nucleus that makes ribosomes

3. _____ together

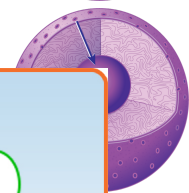
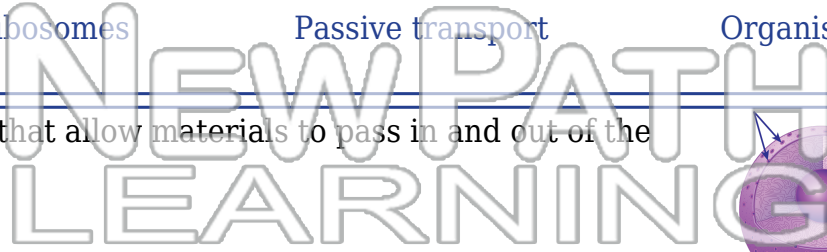
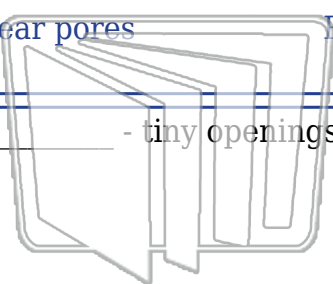
4. _____ functions

5. _____

6. _____ - the diffusion of water through a cell membrane (semipermeable membrane) from a higher water concentration (dilute solution) to a lower water concentration (more concentrated solution)

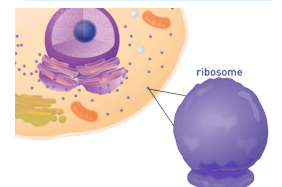
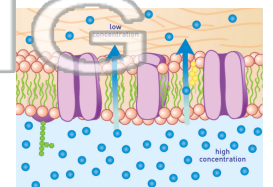
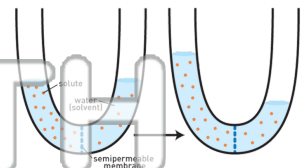
7. _____ - the diffusion of substances across a cell membrane from an area of high concentration to an area of low concentration without the use of energy

8. _____ - the organelles that produce proteins needed by the cell



PREVIEW

Please [Sign In](#) or [Sign Up](#) to download the printable version of this worksheet





Name _____ Class _____ Date _____

Match each of the following terms to its definition:

Osmosis

Organ system

Nucleolus

Organ

Nuclear pores

Ribosomes

Passive transport

Organism

1. **nuclear pores** - tiny openings that allow materials to pass in and out of the nucleus

2. **nucleolus** - a large cellular structure within a nucleus that makes ribosomes

3. **organ** together

4. **organ** functions

5. **organ**

PREVIEW

Please [Sign In](#) or [Sign Up](#) to download the printable version of this worksheet

6. **osmosis** - the diffusion of water through a cell membrane (semipermeable membrane) from a higher water concentration (dilute solution) to a lower water concentration (more concentrated solution)

7. **passive transport** - the diffusion of substances across a cell membrane from an area of high concentration to an area of low concentration without the use of energy

8. **ribosomes** - the organelles that produce proteins needed by the cell

