



Name \_\_\_\_\_ Class \_\_\_\_\_ Date \_\_\_\_\_

### Match each of the following terms to its definition:

Guard cells

Momentum

Gymnosperm

Lactic acid fermentation

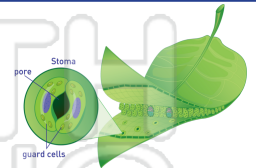
Leaf

Organelle

Ovule

Ovary

1. - a pair of cells found in a stoma that control the size of the pore opening; help control the amount of gases moving in and out of a leaf



2. - group of vascular plants that develop seeds without a protective outer covering; they do not produce flowers or fruit



3. oxygen



4. the pr

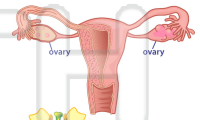
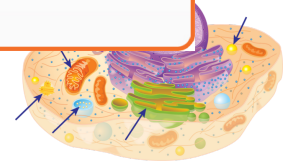
5. that is

6. specif

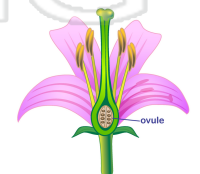
## PREVIEW

Please [Sign In](#) or [Sign Up](#) to download the printable version of this worksheet

7. - the part of the flower that contains egg cells, where seeds form and turn into fruit; a female reproductive organ where eggs are produced



8. - the part of the plant that becomes a fruit; a structure that houses an egg cell





Name \_\_\_\_\_ Class \_\_\_\_\_ Date \_\_\_\_\_

### Match each of the following terms to its definition:

Guard cells

Momentum

Gymnosperm

Lactic acid fermentation

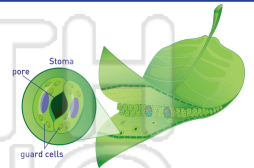
Leaf

Organelle

Ovule

Ovary

**1. guard cells** - a pair of cells found in a stoma that control the size of the pore opening; help control the amount of gases moving in and out of a leaf



**2. gymnosperm** - group of vascular plants that develop seeds without a protective outer covering; they do not produce flowers or fruit



**3. lac**  
oxygen



**4. lea**  
photos

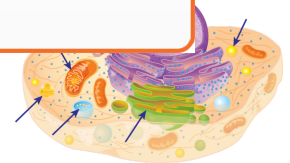
**5. mo**  
depend

## PREVIEW

Please [Sign In](#) or [Sign Up](#) to download the printable version of this worksheet

**6. org**  
nucleu

**7. ovary** - the part of the flower that contains egg cells, where seeds form and turn into fruit; a female reproductive organ where eggs are produced



**8. ovule** - the part of the plant that becomes a fruit; a structure that houses an egg cell

