



Name _____ Class _____ Date _____

Match each of the following terms to its definition:

Metaphase II

Meiosis

Mitosis

Fertilization

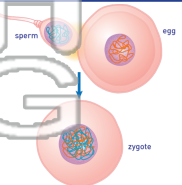
Prophase I

Nucleus

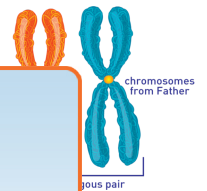
Homologous chromosomes

Metaphase I

1. _____ - the joining of an egg and sperm to form a zygote that develops into a new organism



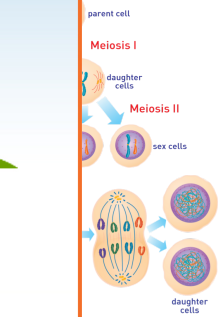
2. _____ - a maternal and paternal chromosome that are the same length and have genes for the same characteristics



3. _____ and sperm



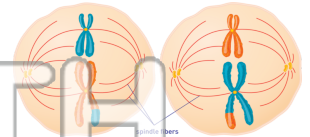
4. _____ develop into _____ production of "parent"



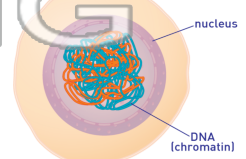
5. _____ chromosomes

PREVIEW
Please [Sign In](#) or [Sign Up](#) to download the printable version of this worksheet

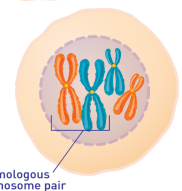
6. _____ - a phase of meiosis II during which the chromosomes line up in the center of the cell and spindle fibers attach to each centromere



7. _____ - organelle that contains the genetic material (DNA) and serves as the control center of the cell



8. _____ - a phase of meiosis I during which chromosomes thicken and homologous pairs of chromosomes move together





Name _____ Class _____ Date _____

Match each of the following terms to its definition:

Metaphase II

Meiosis

Mitosis

Fertilization

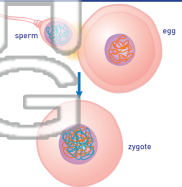
Prophase I

Nucleus

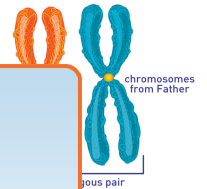
Homologous chromosomes

Metaphase I

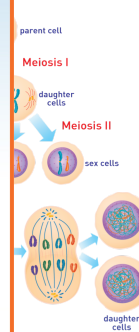
1. **fertilization** - the joining of an egg and sperm to form a zygote that develops into a new organism



2. **homologous chromosomes** - a maternal and paternal chromosome that are the same length and have genes for the same characteristics



3. **meiosis** (sperm) t

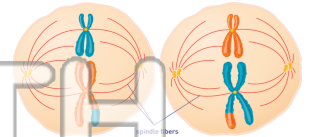


4. **mitosis** (development) product of "parent"

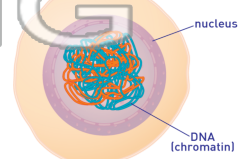
PREVIEW

Please [Sign In](#) or [Sign Up](#) to download the printable version of this worksheet

6. **metaphase II** - a phase of meiosis II during which the chromosomes line up in the center of the cell and spindle fibers attach to each centromere



7. **nucleus** - organelle that contains the genetic material (DNA) and serves as the control center of the cell



8. **prophase I** - a phase of meiosis I during which chromosomes thicken and homologous pairs of chromosomes move together

