



Name \_\_\_\_\_ Class \_\_\_\_\_ Date \_\_\_\_\_

### Match each of the following terms to its definition:

Cilia

Euglena

Eubacteria

Eyespot

Contractile vacuole

Binary fission

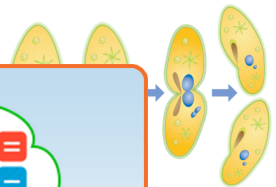
Classification

Autotroph

1. \_\_\_\_\_ - a living organism, such as algae, that is capable of producing its own food; also called a producer



2. \_\_\_\_\_ - a form of asexual reproduction in which a parent cell splits into two identical daughter cells after the DNA is separated



3. \_\_\_\_\_ help tiny wave mo



4. \_\_\_\_\_ similarities

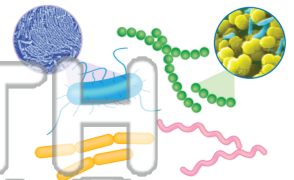
## PREVIEW

Please [Sign In](#) or [Sign Up](#) to download the printable version of this worksheet

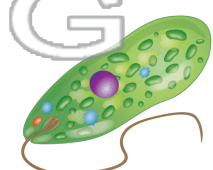
5. \_\_\_\_\_ pumps e



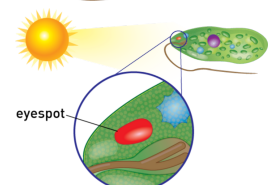
6. \_\_\_\_\_ - one of two different domains of bacteria known as true bacteria; a kingdom of classification which includes unicellular organisms that do not have a nucleus; some make their own food and some need to obtain food from other sources



7. \_\_\_\_\_ - a single-celled organism with both plant and animal cell characteristics



8. \_\_\_\_\_ - an organelle found in certain plant-like protists that responds to light





Name \_\_\_\_\_ Class \_\_\_\_\_ Date \_\_\_\_\_

**Match each of the following terms to its definition:**

Cilia

Euglena

Eubacteria

Eyespot

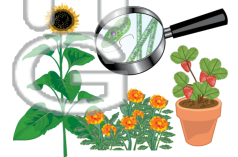
Contractile vacuole

Binary fission

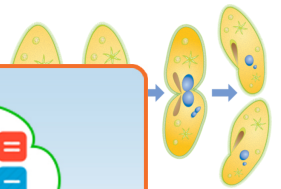
Classification

Autotroph

1. **autotroph** - a living organism, such as algae, that is capable of producing its own food; also called a producer



2. **binary fission** - a form of asexual reproduction in which a parent cell splits into two identical daughter cells after the DNA is generated



3. **cilia** - organism motion a



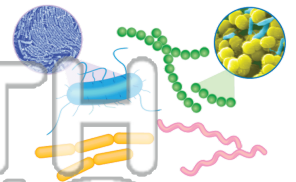
4. **classi** similariti

## PREVIEW

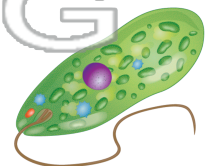
Please [Sign In](#) or [Sign Up](#) to download the printable version of this worksheet

5. **contr** that pum

6. **eubacteria** - one of two different domains of bacteria known as true bacteria; a kingdom of classification which includes unicellular organisms that do not have a nucleus; some make their own food and some need to obtain food from other sources



7. **euglena** - a single-celled organism with both plant and animal cell characteristics



8. **eyespot** - an organelle found in certain plant-like protists that responds to light

