



Name \_\_\_\_\_ Class \_\_\_\_\_ Date \_\_\_\_\_

### Match each of the following terms to its definition:

Centromere

Centriole

Cell

Chromatids

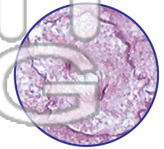
Cell Cycle

Anaphase

Cell Plate

Chromosome

1. \_\_\_\_\_ - a phase of mitosis following metaphase during which the spindle fiber splits the centromere and the chromatids move to opposite sides of the cell



2. \_\_\_\_\_ - the basic building block of all living organisms

3. \_\_\_\_\_ undergo



4. \_\_\_\_\_ into two

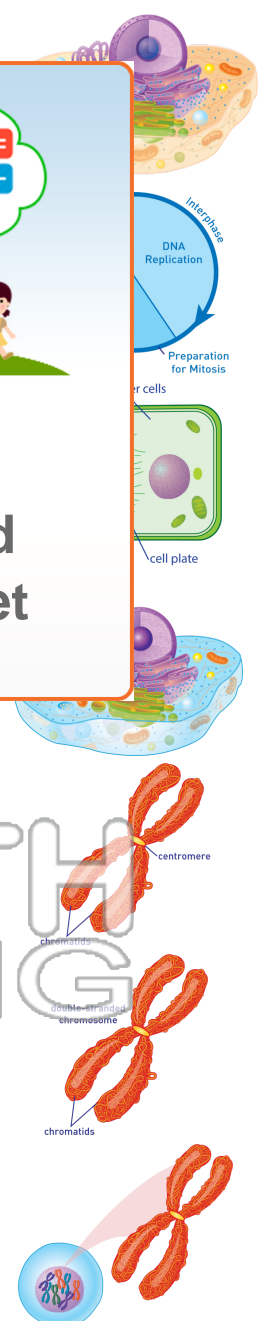
5. \_\_\_\_\_ help to fo

**PREVIEW**  
Please [Sign In](#) or [Sign Up](#) to download the printable version of this worksheet

6. \_\_\_\_\_ - the point on the chromosome where the two chromatids are held together

7. \_\_\_\_\_ - two identical copies of a chromosome

8. \_\_\_\_\_ - a structure of coiled DNA and proteins that forms in the cell's nucleus prior to mitosis





Name \_\_\_\_\_ Class \_\_\_\_\_ Date \_\_\_\_\_

**Match each of the following terms to its definition:**

Centromere

Centriole

Cell

Chromatids

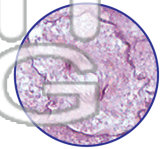
Cell Cycle

Anaphase

Cell Plate

Chromosome

1. **Anaphase** - a phase of mitosis following metaphase during which the spindle fiber splits the centromere and the chromatids move to opposite sides of the cell



2. **Cell** - the basic building block of all living organisms

3. **Cell C**  
undergoe

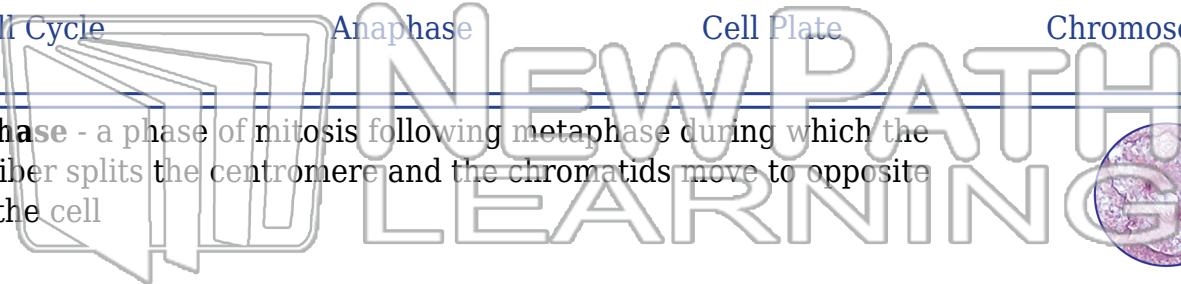
4. **Cell P**  
two daug

5. **Centr**  
form the

6. **Centromere** - the point on the chromosome where the two chromatids are held together

7. **Chromatids** - two identical copies of a chromosome

8. **Chromosome** - a structure of coiled DNA and proteins that forms in the cell's nucleus prior to mitosis



3. Cell C  
undergoe

4. Cell P  
two daug

5. Centr  
form the

**PREVIEW**

Please [Sign In](#) or [Sign Up](#) to download the printable version of this worksheet

