



Name _____ Class _____ Date _____

Match each of the following terms to its definition:

Protein

Nucleus

MRNA

Nitrogen base

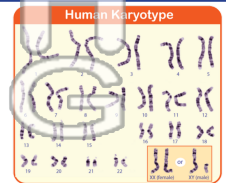
Multiple alleles

Mutation

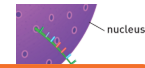
Karyotype

Nucleotide

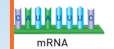
1. _____ - a picture of the actual chromosomes of the organism, arranged in pairs



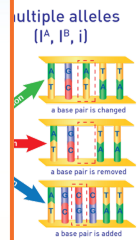
2. _____ - messenger ribonucleic acid; carries a code for producing proteins in the cell



3. _____

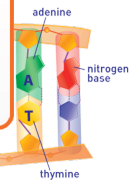


4. _____

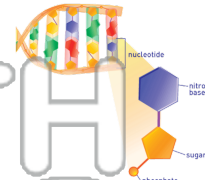


5. _____ DNA or RNA molecule

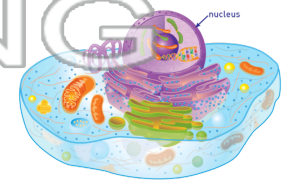
PREVIEW
Please [Sign In](#) or [Sign Up](#) to download the printable version of this worksheet



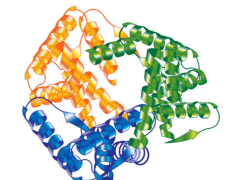
6. _____ - structural unit of DNA that consists of a sugar, phosphate, and nitrogen bases



7. _____ - organelle that contains the genetic material (DNA) and serves as the control center of the cell



8. _____ - large organic molecules that are made of carbon, oxygen, hydrogen, nitrogen, and sometimes sulfur; proteins and lipids are the key components of cell membranes





Name _____ Class _____ Date _____

Match each of the following terms to its definition:

Protein

Nucleus

MRNA

Nitrogen base

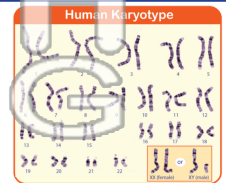
Multiple alleles

Mutation

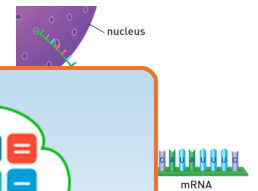
Karyotype

Nucleotide

1. **karyotype** - a picture of the actual chromosomes of the organism, arranged in pairs



2. **mRNA** - messenger ribonucleic acid; carries a code for producing proteins in the cell



3. **multi**

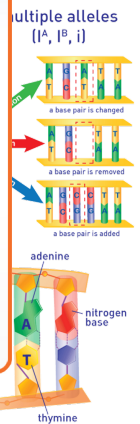


4. **muta**

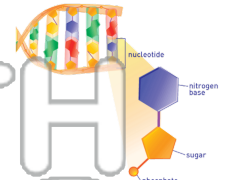
PREVIEW

Please [Sign In](#) or [Sign Up](#) to download the printable version of this worksheet

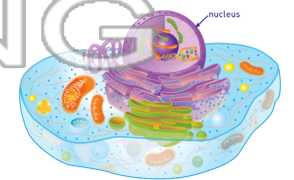
5. **nitrog**
DNA or R
molecul



6. **nucleotide** - structural unit of DNA that consists of a sugar, phosphate, and nitrogen bases



7. **nucleus** - organelle that contains the genetic material (DNA) and serves as the control center of the cell



8. **protein** - large organic molecules that are made of carbon, oxygen, hydrogen, nitrogen, and sometimes sulfur; proteins and lipids are the key components of cell membranes

