



Name \_\_\_\_\_ Class \_\_\_\_\_ Date \_\_\_\_\_

**Match each of the following terms to its definition:**

Allele

Gene

Genetics

Genotype

Heredity

Dominant allele

Chromosome

DNA

1. \_\_\_\_\_ - different forms of a gene

2. \_\_\_\_\_ - the two daughter strands of a replicated chromatin that are condensed into a rod shape



3. \_\_\_\_\_  
4. \_\_\_\_\_  
5. \_\_\_\_\_

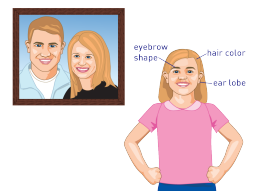
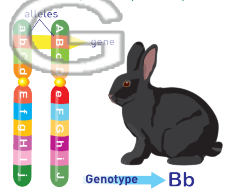
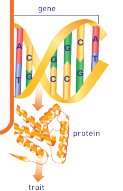
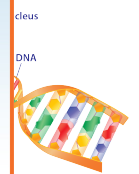
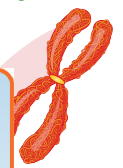
**PREVIEW**

Please [Sign In](#) or [Sign Up](#) to download the printable version of this worksheet

6. \_\_\_\_\_ - the study of heredity

7. \_\_\_\_\_ - the genetic makeup of a particular organism

8. \_\_\_\_\_ - the passing of traits or characteristics from one generation to the next





Name \_\_\_\_\_ Class \_\_\_\_\_ Date \_\_\_\_\_

**Match each of the following terms to its definition:**

Allele

Gene

Genetics

Genotype

Heredity

Dominant allele

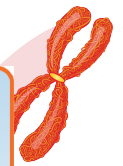
Chromosome

DNA

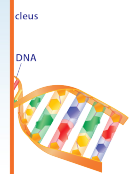
1. **allele** - different forms of a gene



2. **chromosome** - the two daughter strands of a replicated chromatin that are condensed into a rod shape



3. **DNA**



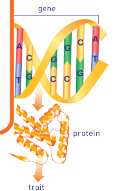
4. **dominant allele**



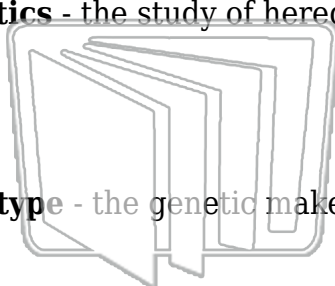
## PREVIEW

Please [Sign In](#) or [Sign Up](#) to download the printable version of this worksheet

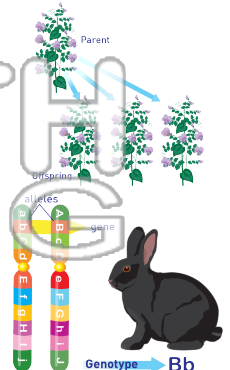
5. **gene**



6. **genetics** - the study of heredity



7. **genotype** - the genetic makeup of a particular organism



8. **heredity** - the passing of traits or characteristics from one generation to the next

