



Name _____ Class _____ Date _____

Match each of the following terms to its definition:

Invertebrate

Heterotroph

Phloem

Mycelium

Fungi

Kingdom

Hyphae

Gymnosperm

1. _____ - a kingdom of scientific classification which includes organisms that are multicellular, have a nucleus, and need to obtain energy from other sources (for example - mushrooms)



2. _____ - group of vascular plants that develop seeds without a protective outer covering; they do not produce flowers or fruit



3. _____ food; also

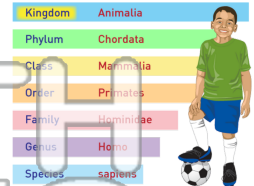


4. _____ bodies of

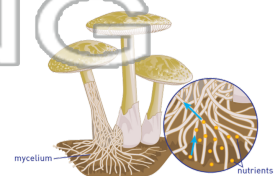
5. _____ groups of

PREVIEW
Please [Sign In](#) or [Sign Up](#) to download the printable version of this worksheet

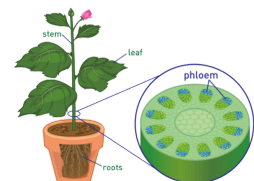
6. _____ - large category included in scientific classification system and the taxonomic category above phylum; scientists recognize six kingdoms: animals, plants, fungi, protista, eubacteria, and archaeobacteria



7. _____ - a mass of fungal hyphae that absorbs nutrients



8. _____ - vascular tissue that transports organic nutrients to all parts of the plant





Name _____ Class _____ Date _____

Match each of the following terms to its definition:

Invertebrate

Heterotroph

Phloem

Mycelium

Fungi

Kingdom

Hyphae

Gymnosperm

1. fungi - a kingdom of scientific classification which includes organisms that are multicellular, have a nucleus, and need to obtain energy from other sources (for example - mushrooms)



2. gymnosperm - group of vascular plants that develop seeds without a protective outer covering; they do not produce flowers or fruit



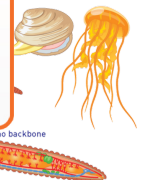
3. heterotroph - organism that cannot make its own food; also called a consumer



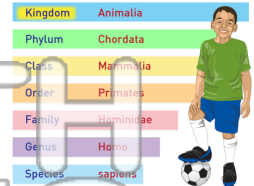
4. hyphae - long, thin, branching structures of multicellular fungi



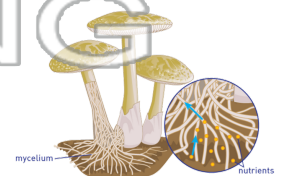
5. invertebrates - animals that do not have a backbone



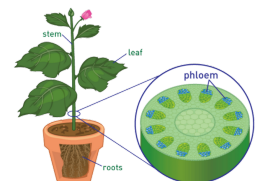
6. kingdom - large category included in scientific classification system and the taxonomic category above phylum; scientists recognize six kingdoms: animals, plants, fungi, protista, eubacteria, and archaeobacteria



7. mycelium - a mass of fungal hyphae that absorbs nutrients



8. phloem - vascular tissue that transports organic nutrients to all parts of the plant



PREVIEW

Please [Sign In](#) or [Sign Up](#) to download the printable version of this worksheet