



Name \_\_\_\_\_ Class \_\_\_\_\_ Date \_\_\_\_\_

### Match each of the following terms to its definition:

Frost wedging

Delta

Humus

Exfoliation

Deposition

Dune

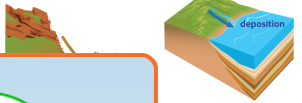
Load

Erosion

1. \_\_\_\_\_ - a triangular deposit of sediments at the point where a river empties into a body of water



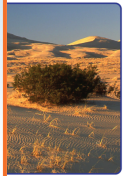
2. \_\_\_\_\_ - the process by which sediment is laid down



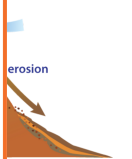
3. \_\_\_\_\_  
to a new

**PREVIEW**

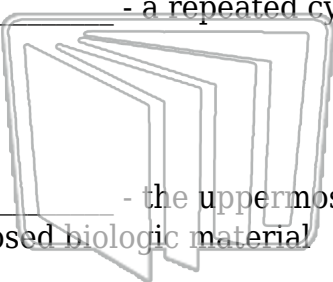
Please [Sign In](#) or [Sign Up](#) to download the printable version of this worksheet



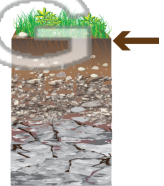
4. \_\_\_\_\_  
cooling t



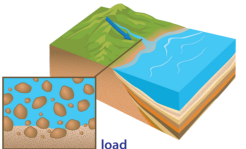
6. \_\_\_\_\_ - a repeated cycle of freezing and thawing that causes rocks to crack



7. \_\_\_\_\_ - the uppermost layer of the soil composed mainly of decomposed biologic material



8. \_\_\_\_\_ - the amount of sediment and dissolved materials a stream or river can carry





Name \_\_\_\_\_ Class \_\_\_\_\_ Date \_\_\_\_\_

**Match each of the following terms to its definition:**

Frost wedging

Delta

Humus

Exfoliation

Deposition

Dune

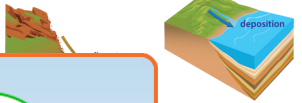
Load

Erosion

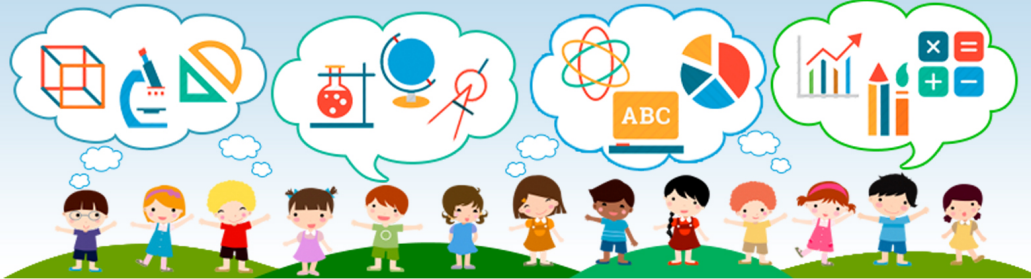
1. **delta** - a triangular deposit of sediments at the point where a river empties into a body of water



2. **deposition** - the process by which sediment is laid down



3. **dune**

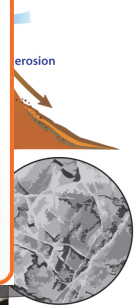


4. **erosion**  
new local



5. **exfoliation**  
that causes

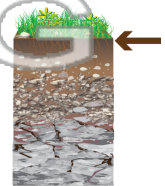
**PREVIEW**  
Please [Sign In](#) or [Sign Up](#) to download the printable version of this worksheet



6. **frost wedging** - a repeated cycle of freezing and thawing that causes rocks to crack



7. **humus** - the uppermost layer of the soil composed mainly of decomposed biologic material



8. **load** - the amount of sediment and dissolved materials a stream or river can carry

