



Name _____ Class _____ Date _____

Match each of the following terms to its definition:

Magma

Rock cycle

Organic sedimentary

Intrusive igneous rock

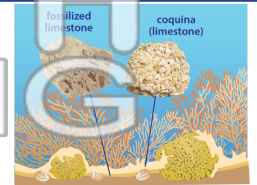
Chemical sedimentary rock

Regional metamorphism

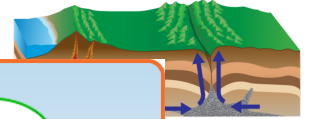
Extrusive

Sedimentary rock

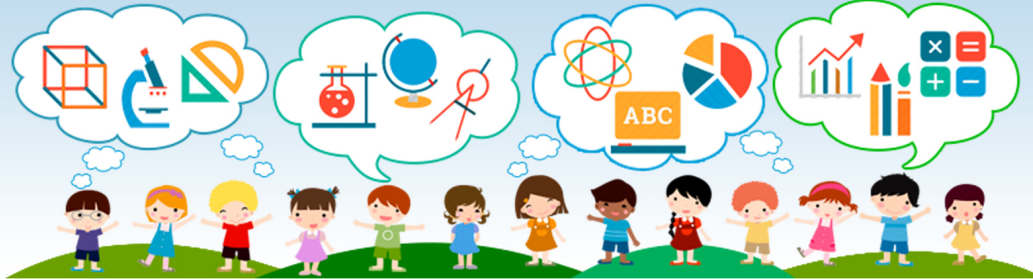
1. _____ - sedimentary rock formed by the accumulation of shell material on the ocean floor



2. _____ - metamorphism of a rock caused by intense pressure such as mountain formation



3. _____ rock type

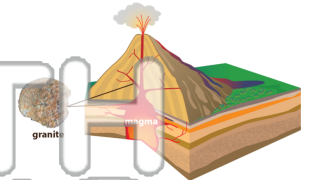


4. _____ transport

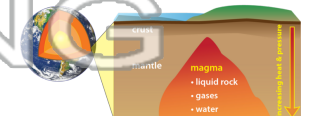
5. _____ hardens

PREVIEW
Please [Sign In](#) or [Sign Up](#) to download the printable version of this worksheet

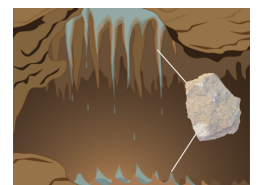
6. _____ - igneous rock that is trapped and hardens under the Earth's crust



7. _____ - liquid (molten) rock that is trapped under the Earth's crust



8. _____ - sedimentary rock formed by the chemical precipitation of mineral material from ocean water (such as gypsum, limestone and halite)





Name _____ Class _____ Date _____

Match each of the following terms to its definition:

Magma

Rock cycle

Organic sedimentary

Intrusive igneous rock

Chemical sedimentary rock

Regional metamorphism

Extrusive

Sedimentary rock

1. **organic sedimentary** - sedimentary rock formed by the accumulation of shell material on the ocean floor



2. **regional metamorphism** - metamorphism of a rock caused by intense pressure such as mountain formation



3. **rock cycle** - type is to

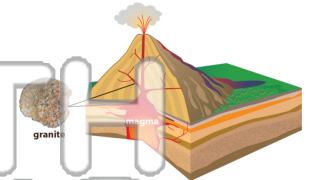


4. **sedimentary** - erosion,

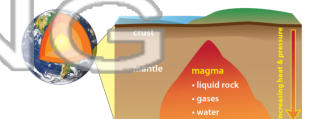
5. **extrusive** - hardens

PREVIEW
Please [Sign In](#) or [Sign Up](#) to download the printable version of this worksheet

6. **intrusive igneous rock** - igneous rock that is trapped and hardens under the Earth's crust



7. **magma** - liquid (molten) rock that is trapped under the Earth's crust



8. **chemical sedimentary rock** - sedimentary rock formed by the chemical precipitation of mineral material from ocean water (such as gypsum, limestone and halite)

