



Name \_\_\_\_\_ Class \_\_\_\_\_ Date \_\_\_\_\_

**Match each of the following terms to its definition:**

Venus

Reflect

Pluto

New moon

Uranus

Saturn

Neptune

Star

1. \_\_\_\_\_ - the eighth planet from Sun, the coldest planet, found farthest from the Sun

2. \_\_\_\_\_ - the moon phase when Moon comes between the Earth and the Sun and the Moon appears completely darkened; only the far side of the Moon face

3. \_\_\_\_\_  
to be known

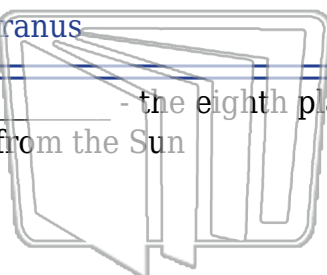
4. \_\_\_\_\_

5. \_\_\_\_\_  
known for

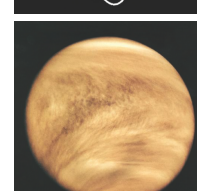
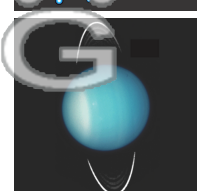
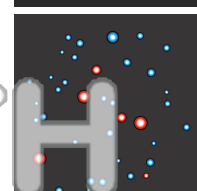
6. \_\_\_\_\_ - a hot ball of gas

7. \_\_\_\_\_ - the seventh planet from the Sun; it is blue in color and looks like it spins on its side

8. \_\_\_\_\_ - the second planet from the Sun that has a similar size as Earth



NEW PATH LEARNING




**PREVIEW**

Please [Sign In](#) or [Sign Up](#) to download the printable version of this worksheet



Name \_\_\_\_\_ Class \_\_\_\_\_ Date \_\_\_\_\_

**Match each of the following terms to its definition:**

Venus

Reflect

Pluto

New moon

Uranus

Saturn

Neptune

Star

1. **Neptune** - the eighth planet from Sun; the coldest planet, found farthest from the Sun

2. **new moon** - the moon phase when Moon comes between the Earth and the Sun and the Moon appears completely darkened; only the far side of the Moon face is visible

3. **Pluto** known as the dwarf planet

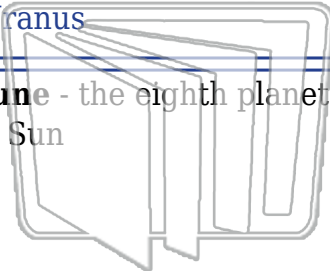
4. **reflect** - to bounce back

5. **Saturn** known for its rings

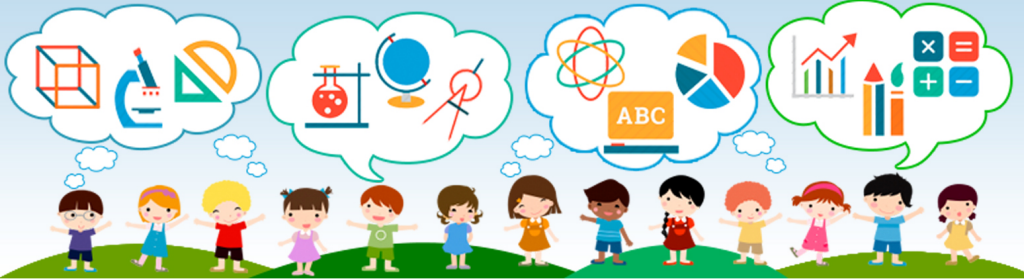
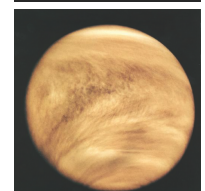
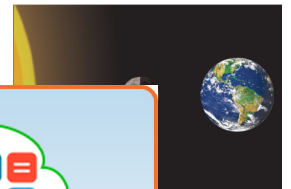
6. **star** - a hot ball of gas

7. **Uranus** - the seventh planet from the Sun; it is blue in color and looks like it spins on its side

8. **Venus** - the second planet from the Sun that has a similar size as Earth

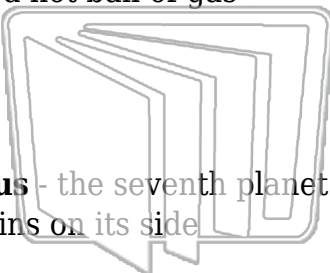


NEW PATH LEARNING



**PREVIEW**

Please [Sign In](#) or [Sign Up](#) to download the printable version of this worksheet



NEW PATH LEARNING