



Name _____ Class _____ Date _____

Match each of the following terms to its definition:

Tuber

Rhizome

Perennial plant

Seed coat

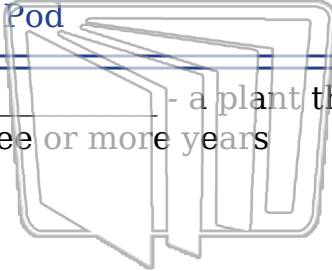
Pod

Spore

Seedling

Annual plant

1. _____ - a plant that grows, flowers, produces seeds, and lives for three or more years



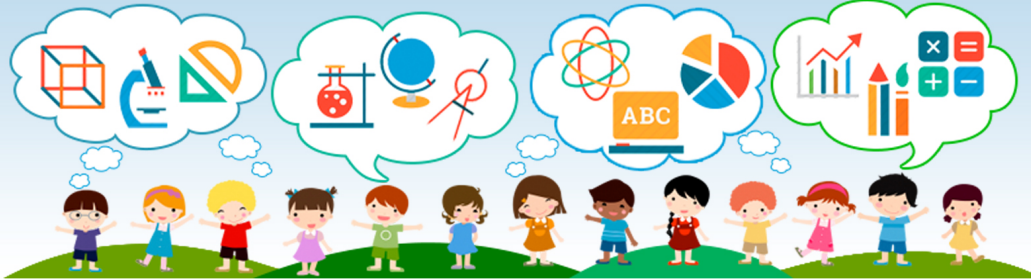
NEW PATH
LEARNING



2. _____ - a fruit that ripens, dries out and opens to release its seeds



3. _____
of, whi

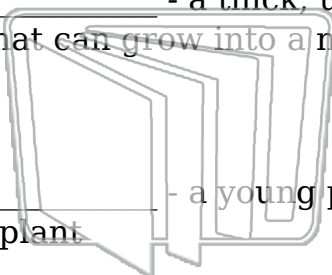


4. _____
the see

5. _____
order t

PREVIEW
Please [Sign In](#) or [Sign Up](#) to download
the printable version of this worksheet

6. _____ - a thick, usually underground, stem of a plant that has buds that can grow into a new plant



NEW PATH
LEARNING



7. _____ - a young plant that is in its early stages of growth, a young plant



8. _____ - a plant that grows, flowers, produces seeds and dies all in the same year





Name _____ Class _____ Date _____

Match each of the following terms to its definition:

Tuber

Rhizome

Perennial plant

Seed coat

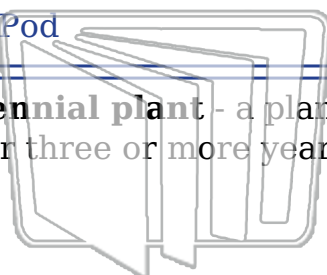
Pod

Spore

Seedling

Annual plant

1. **perennial plant** - a plant that grows, flowers, produces seeds, and lives for three or more years



NEW PATH LEARNING



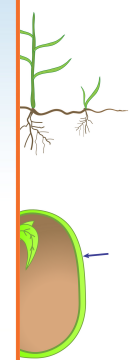
2. **pod** - a fruit that ripens, dries out and opens to release its seeds



3. **rhizome** which is



4. **seed** seed up



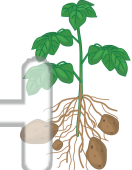
5. **spore** develop

PREVIEW
Please [Sign In](#) or [Sign Up](#) to download the printable version of this worksheet

6. **tuber** - a thick, usually underground, stem of a plant that has buds that can grow into a new plant



NEW PATH LEARNING



7. **seedling** - a young plant that is in its early stages of growth; a young plant



8. **annual plant** - a plant that grows, flowers, produces seeds and dies all in the same year

