



Name _____ Class _____ Date _____

Match each of the following terms to its definition:

Heredity

Fungi

Internal development

Heterotroph

Inherited trait

Incomplete metamorphosis

Hyphae

Gymnosperm

1. _____ - a kingdom of scientific classification which includes organisms that are multicellular, have a nucleus, and need to obtain energy from other sources (for example - mushrooms)



2. _____ - group of vascular plants that develop seeds without a protective outer covering; they do not produce flowers or fruit



3. _____ offspring



4. _____ food; also

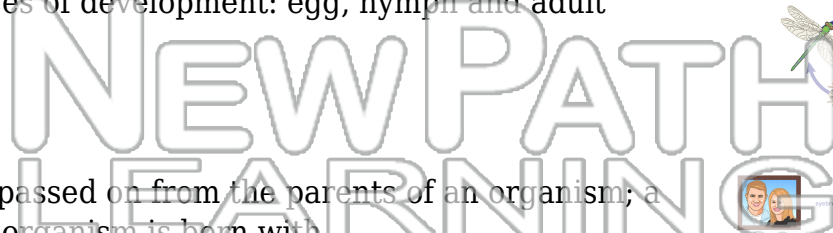
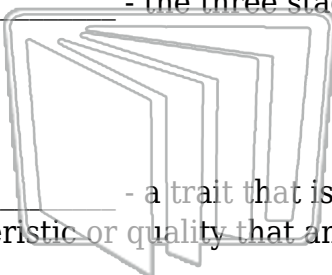


5. _____ bodies of

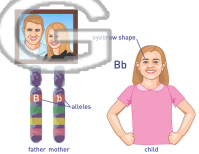
PREVIEW
Please [Sign In](#) or [Sign Up](#) to download the printable version of this worksheet



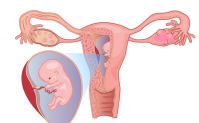
6. _____ - the three stages of development: egg, nymph and adult



7. _____ - a trait that is passed on from the parents of an organism; a characteristic or quality that an organism is born with



8. _____ - the process of an organism developing inside of an organism





Name _____ Class _____ Date _____

Match each of the following terms to its definition:

Heredity

Fungi

Internal development

Heterotroph

Inherited trait

Incomplete metamorphosis

Hyphae

Gymnosperm

1. **fungi** - a kingdom of scientific classification which includes organisms that are multicellular, have a nucleus, and need to obtain energy from other sources (for example - mushrooms)



2. **gymnosperm** - group of vascular plants that develop seeds without a protective outer covering; they do not produce flowers or fruit



3. **heredity** - passing on of traits from parents to offspring



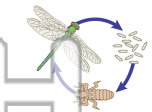
4. **heterotroph** - organism that cannot make its own food; also called a consumer



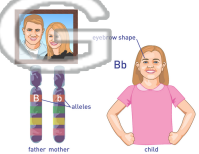
5. **hyphae** - long, thin, branching structures of multicellular fungi



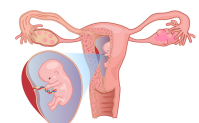
6. **incomplete metamorphosis** - the three stages of development: egg, nymph and adult



7. **inherited trait** - a trait that is passed on from the parents of an organism; a characteristic or quality that an organism is born with



8. **internal development** - the process of an organism developing inside of an organism



PREVIEW

Please [Sign In](#) or [Sign Up](#) to download the printable version of this worksheet