



Name _____ Class _____ Date _____

Match each of the following terms to its definition:

Nucleus

Microorganism

Nuclear pores

Nucleolus

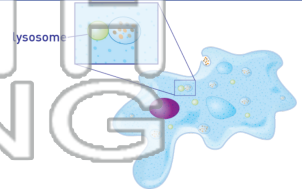
Multicellular organism

Microscope

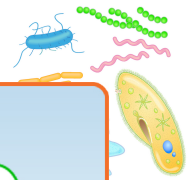
Lysosome

Nuclear envelope

1. _____ - a cell organelle that contains chemicals (enzymes) to break down food and recycle waste materials



2. _____ - an organism that is too small to see with our eyes alone



3. _____
larger so
magnifie

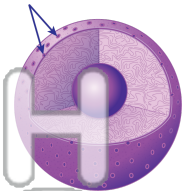


4. _____

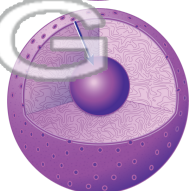
5. _____

PREVIEW
Please [Sign In](#) or [Sign Up](#) to download the printable version of this worksheet

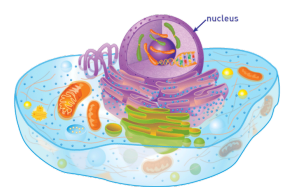
6. _____ - tiny openings that allow materials to pass in and out of the nucleus



7. _____ - a large cellular structure within a nucleus that makes ribosomes



8. _____ - organelle that contains the genetic material (DNA) and serves as the control center of the cell





Name _____ Class _____ Date _____

Match each of the following terms to its definition:

Nucleus

Microorganism

Nuclear pores

Nucleolus

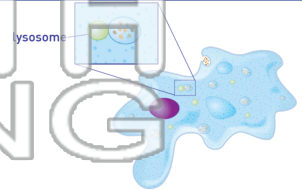
Multicellular organism

Microscope

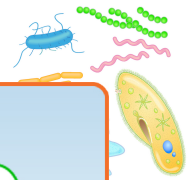
Lysosome

Nuclear envelope

1. **lysosome** - a cell organelle that contains chemicals (enzymes) to break down food and recycle waste materials



2. **microorganism** - an organism that is too small to see with our eyes alone



3. **micro**
so that th
small obj

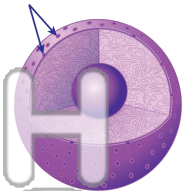


4. **multi**

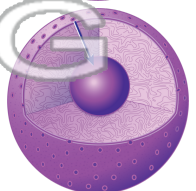
5. **nucle**
nucleus

PREVIEW
Please [Sign In](#) or [Sign Up](#) to download
the printable version of this worksheet

6. **nuclear pores** - tiny openings that allow materials to pass in and out of the nucleus



7. **nucleolus** - a large cellular structure within a nucleus that makes ribosomes



8. **nucleus** - organelle that contains the genetic material (DNA) and serves as the control center of the cell

