



Name \_\_\_\_\_ Class \_\_\_\_\_ Date \_\_\_\_\_

### Match each of the following terms to its definition:

Alternating current (AC)

Electricity

Fuse

Direct current (DC)

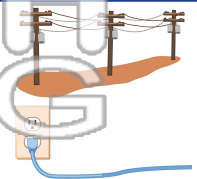
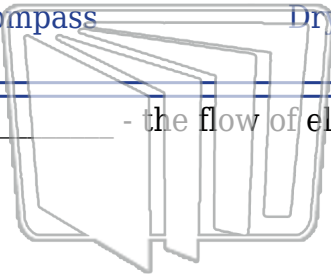
Compass

Dry cell battery

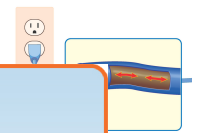
Electromagnet

Generator

1. \_\_\_\_\_ - the flow of electrical charge; another name for an electric current



2. \_\_\_\_\_ - a type of electrical current in which the electrical charges in a circuit flow back and forth



3. \_\_\_\_\_ tool that always p

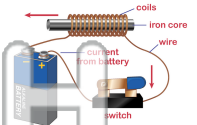
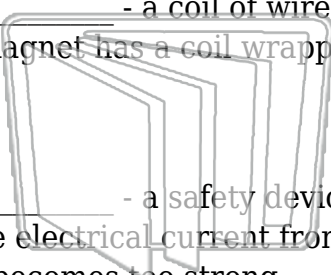


4. \_\_\_\_\_ one direc

5. \_\_\_\_\_

**PREVIEW**  
Please [Sign In](#) or [Sign Up](#) to download the printable version of this worksheet

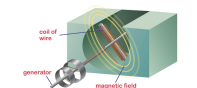
6. \_\_\_\_\_ - a coil of wire through which an electric current passes; an electromagnet has a coil wrapped around an iron core



7. \_\_\_\_\_ - a safety device that has a metal wire which melts and stops the electrical current from flowing through the circuit when the current becomes too strong



8. \_\_\_\_\_ - a device that uses magnets and wires to turn mechanical energy into electrical energy by using the wind, falling water, and even steam





Name \_\_\_\_\_ Class \_\_\_\_\_ Date \_\_\_\_\_

**Match each of the following terms to its definition:**

Alternating current (AC)

Electricity

Fuse

Direct current (DC)

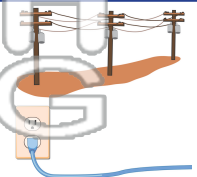
Compass

Dry cell battery

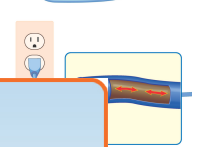
Electromagnet

Generator

1. **electricity** - the flow of electrical charge; another name for an electric current



2. **alternating current (AC)** - a type of electrical current in which the electrical charges in a circuit flow back and forth



3. **compass** that has a pointing needle



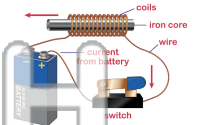
4. **direct current (DC)** only in one direction



5. **dry cell battery**

**PREVIEW**  
Please [Sign In](#) or [Sign Up](#) to download the printable version of this worksheet

6. **electromagnet** - a coil of wire through which an electric current passes; an electromagnet has a coil wrapped around an iron core



7. **fuse** - a safety device that has a metal wire which melts and stops the electrical current from flowing through the circuit when the current becomes too strong



8. **generator** - a device that uses magnets and wires to turn mechanical energy into electrical energy by using the wind, falling water, and even steam

