



Name _____ Class _____ Date _____

Match each of the following terms to its definition:

Microscope

Nuclear pores

Muscular system

Lysosome

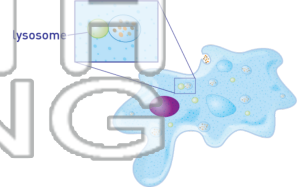
Neurons

Nuclear envelope

Mitochondrion

Nervous system

1. _____ - a cell organelle that contains chemicals (enzymes) to break down food and recycle waste materials



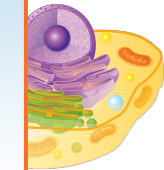
2. _____ - a tool used by scientists to make small things appear larger so that they are easier to observe and study; an instrument that magnifies



3. _____ molecule



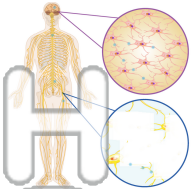
4. _____ your skeleton



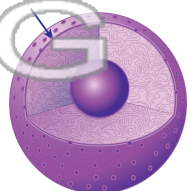
5. _____ the peripheral nervous system of the body

PREVIEW
Please [Sign In](#) or [Sign Up](#) to download the printable version of this worksheet

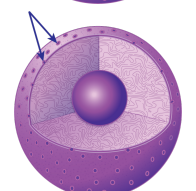
6. _____ - specialized cells of the nervous system that carry messages; cells that pass along signals to and from your brain, your spinal cord, and other parts of your body



7. _____ - a membrane which surrounds and protects the nucleus



8. _____ - tiny openings that allow materials to pass in and out of the nucleus





Name _____ Class _____ Date _____

Match each of the following terms to its definition:

Microscope

Nuclear pores

Muscular system

Lysosome

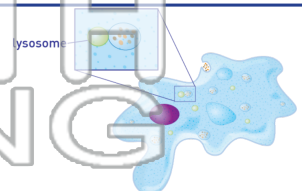
Neurons

Nuclear envelope

Mitochondrion

Nervous system

1. **lysosome** - a cell organelle that contains chemicals (enzymes) to break down food and recycle waste materials



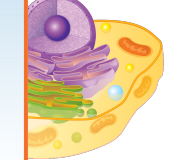
2. **microscope** - a tool used by scientists to make small things appear larger so that they are easier to observe and study; an instrument that magnifies small objects



3. **mitochondrion** - a molecule



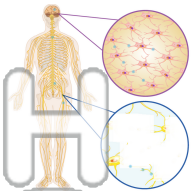
4. **muscular system** - muscles attached to your skeleton



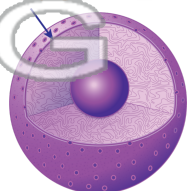
5. **nervous system** - the brain, spinal cord, and the peripheral nerves; a system of organs; a system of organs with parts of the body



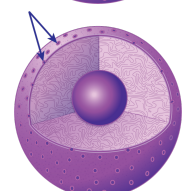
6. **neurons** - specialized cells of the nervous system that carry messages; cells that pass along signals to and from your brain, your spinal cord, and other parts of your body



7. **nuclear envelope** - a membrane which surrounds and protects the nucleus



8. **nuclear pores** - tiny openings that allow materials to pass in and out of the nucleus



PREVIEW

Please [Sign In](#) or [Sign Up](#) to download the printable version of this worksheet