



Name _____ Class _____ Date _____

Match each of the following terms to its definition:

Cell membrane

Cell wall

Stem

Chlorophyll

Cell

Cytoplasm

DNA

Compound microscope

1. _____ - the part of the plant that supports the plant, allows plant to reach above soil to take in sunshine, and carries water and nutrients from the roots to the rest of the plant

2. _____ - a green pigment found in the chloroplasts of most plants and algae which absorbs light to produce sugars during the process of photosynthesis

3. _____

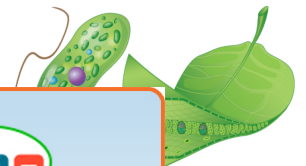
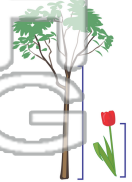
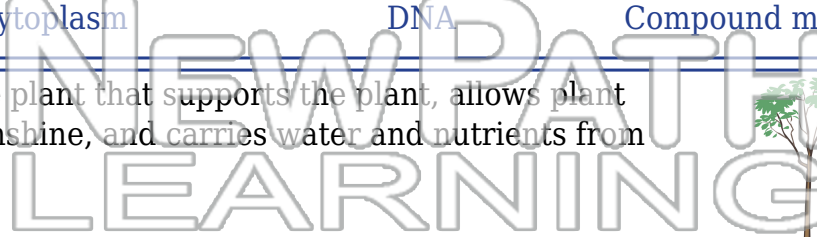
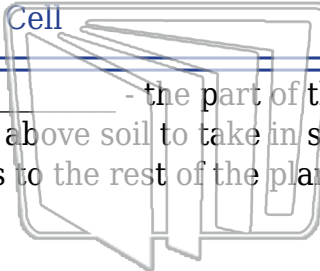
4. _____
substance
cells

5. _____
organism

6. _____ - a microscope that contains more than one lens

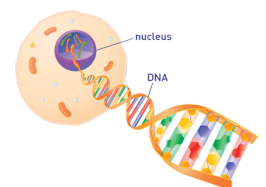
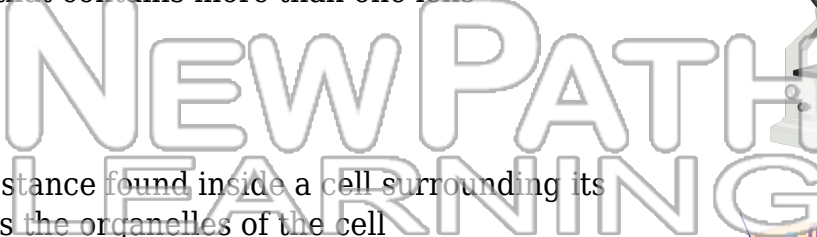
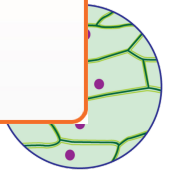
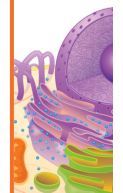
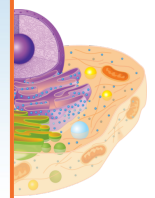
7. _____ - a jelly-like substance found inside a cell surrounding its organelles; supports and protects the organelles of the cell

8. _____ - deoxyribonucleic acid; genetic material within the nucleus



PREVIEW

Please [Sign In](#) or [Sign Up](#) to download the printable version of this worksheet





Name _____ Class _____ Date _____

Match each of the following terms to its definition:

Cell membrane

Cell wall

Stem

Chlorophyll

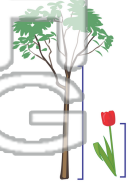
Cell

Cytoplasm

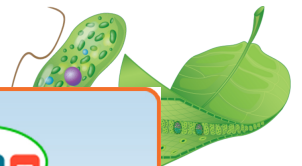
DNA

Compound microscope

1. stem - the part of the plant that supports the plant, allows plant to reach above soil to take in sunshine, and carries water and nutrients from the roots to the rest of the plant



2. chlorophyll - a green pigment found in the chloroplasts of most plants and algae which absorbs light to produce sugars during the process of photosynthesis



3. cell -



4. cell membrane - a thin layer that surrounds the cell and controls what enters and leaves the cell

5. cell wall - a rigid layer that surrounds the cell and provides structural support

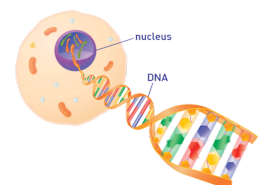
6. compound microscope - a microscope that contains more than one lens



7. cytoplasm - a jelly-like substance found inside a cell surrounding its organelles; supports and protects the organelles of the cell



8. DNA - deoxyribonucleic acid; genetic material within the nucleus



PREVIEW

Please [Sign In](#) or [Sign Up](#) to download the printable version of this worksheet