



Name \_\_\_\_\_ Class \_\_\_\_\_ Date \_\_\_\_\_

**Match each of the following terms to its definition:**

Root

Organ system

Nuclear envelope

Organ

Respiration

Nucleolus

Nuclear pores

Microscope

1. \_\_\_\_\_ - a tool used by scientists to make small things appear larger so that they are easier to observe and study; an instrument that magnifies small objects



2. \_\_\_\_\_ - a membrane which surrounds and protects the nucleus



3. \_\_\_\_\_  
the nucle

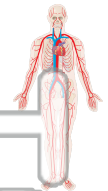


4. \_\_\_\_\_  
ribosome

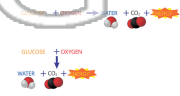
5. \_\_\_\_\_  
together

**PREVIEW**  
Please [Sign In](#) or [Sign Up](#) to download the printable version of this worksheet

6. \_\_\_\_\_ - a group of organs working together to perform certain functions



7. \_\_\_\_\_ - a process that cells use to get energy by breaking down food molecules and releasing the energy that the food holds



8. \_\_\_\_\_ - a part of the plant that keeps the plant in the ground, and takes in water and nutrients from the soil





Name \_\_\_\_\_ Class \_\_\_\_\_ Date \_\_\_\_\_

**Match each of the following terms to its definition:**

Root

Organ system

Nuclear envelope

Organ

Respiration

Nucleolus

Nuclear pores

Microscope

**1. microscope** - a tool used by scientists to make small things appear larger so that they are easier to observe and study; an instrument that magnifies small objects



**2. nuclear envelope** - a membrane which surrounds and protects the nucleus



**3. nucleolus** - a small, dense, spherical body within the nucleus

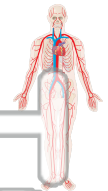


**4. nuclear pore** - a channel through which molecules can pass between the nucleus and the cytoplasm

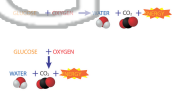
**5. organ system** - a group of organs that work together to perform a specific function

**PREVIEW**  
Please [Sign In](#) or [Sign Up](#) to download the printable version of this worksheet

**6. organ system** - a group of organs working together to perform certain functions



**7. respiration** - a process that cells use to get energy by breaking down food molecules and releasing the energy that the food holds



**8. root** - a part of the plant that keeps the plant in the ground, and takes in water and nutrients from the soil

