



Name _____ Class _____ Date _____

Match each of the following terms to its definition:

Plant life cycle

Mimicry

Mycelium

Protozoa

Phloem

Muscular system

Nervous system

Protista

1. _____ - the act of resembling or acting like another organism in order to protect the organism from predators; an adaptation that allows an animal to look or act like a stronger (more scary) animal, this fakes its predators out by making them think they are poison



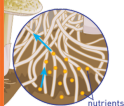
2. _____ - a body system made up of muscles that are attached to your skeletal system and help you move all your body parts



3. _____

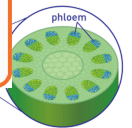


4. _____
the peripheral
network
the body

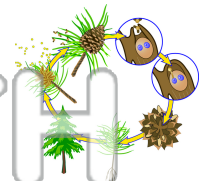


5. _____
parts of t

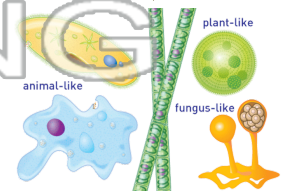
PREVIEW
Please [Sign In](#) or [Sign Up](#) to download
the printable version of this worksheet



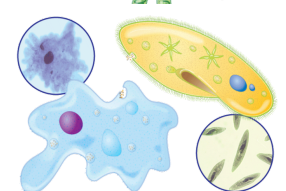
6. _____ - how long a plant takes to grow, flower, and make seeds



7. _____ - a kingdom of scientific classification which includes organisms that are mostly unicellular, their cells have a nucleus, some make their own food while others need to get their food from other sources (for example - amoebas); single-celled or many-celled



8. _____ - single-celled, animal-like protist that has the ability to move





Name _____ Class _____ Date _____

Match each of the following terms to its definition:

Plant life cycle

Mimicry

Mycelium

Protozoa

Phloem

Muscular system

Nervous system

Protista

1. mimicry - the act of resembling or acting like another organism in order to protect the organism from predators; an adaptation that allows an animal to look or act like a stronger (more scary) animal, this fakes its predators out by making them think they are poison



2. muscular system - a body system made up of muscles that are attached to your skeletal system and help you move all your body parts



3. mycelium



4. nervous system and the organs; a part of the body with parts that control the body's actions

5. phloem the plant tissue that carries the food

PREVIEW
Please [Sign In](#) or [Sign Up](#) to download the printable version of this worksheet

6. plant life cycle - how long a plant takes to grow, flower, and make seeds

7. protista - a kingdom of scientific classification which includes organisms that are mostly unicellular, their cells have a nucleus, some make their own food while others need to get their food from other sources (for example - amoebas); single-celled or many-celled

8. protozoa - single-celled, animal-like protist that has the ability to move

