



Name _____ Class _____ Date _____

Match each of the following terms to its definition:

Condensation

Isobars

Cumulus clouds

Evaporation

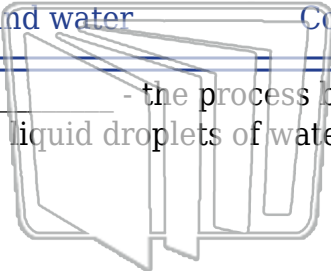
Ground water

Coriolis effect

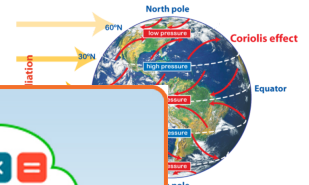
Cumulonimbus cloud

Doppler radar

1. _____ - the process by which water vapor (gas) cools and becomes liquid droplets of water



2. _____ - the apparent curving motion of an object caused by the rotation of the surface on which it is moving; the curved direction of global winds ca



3. _____
thunders

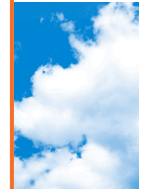


4. _____
weather

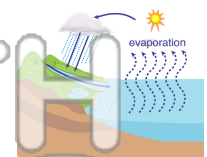


5. _____
location,

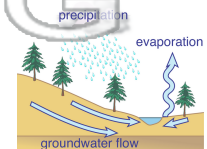
PREVIEW
Please [Sign In](#) or [Sign Up](#) to download the printable version of this worksheet



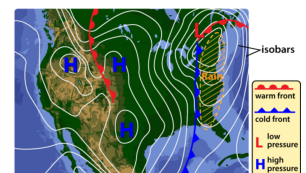
6. _____ - the process of a liquid changing into a gas (vapor); evaporation occurs when the sun warms the water on Earth and some of that water changes into water vapor which then goes into the air



7. _____ - water that collects in the soil, sand and rocks below the Earth's surface



8. _____ - lines of equal atmospheric pressure on a weather map





Name _____ Class _____ Date _____

Match each of the following terms to its definition:

Condensation

Isobars

Cumulus clouds

Evaporation

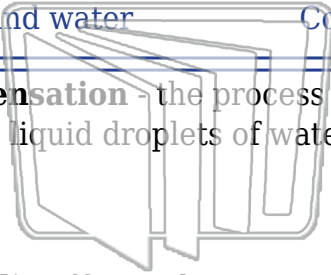
Ground water

Coriolis effect

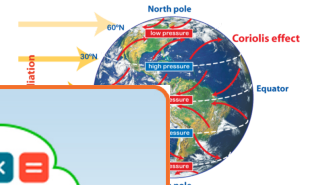
Cumulonimbus cloud

Doppler radar

1. condensation - the process by which water vapor (gas) cools and becomes liquid droplets of water



2. Coriolis effect - the apparent curving motion of an object caused by the rotation of the surface on which it is moving; the curved direction of global winds ca



3. cumu
associate

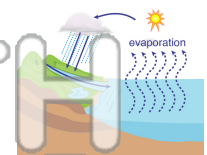


4. cumu
weather

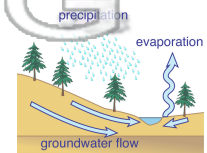
5. Dopp
location,

PREVIEW
Please [Sign In](#) or [Sign Up](#) to download the printable version of this worksheet

6. evaporation - the process of a liquid changing into a gas (vapor); evaporation occurs when the sun warms the water on Earth and some of that water changes into water vapor which then goes into the air



7. ground water - water that collects in the soil, sand and rocks below the Earth's surface



8. isobars - lines of equal atmospheric pressure on a weather map

