

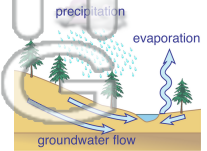


Name \_\_\_\_\_ Class \_\_\_\_\_ Date \_\_\_\_\_

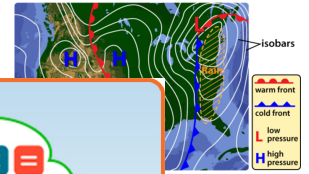
## Match each of the following terms to its definition:

- Salinity
- Ozone layer
- Isobars
- Relative humidity
- Ground water
- Thermosphere
- Metric system
- Stratosphere

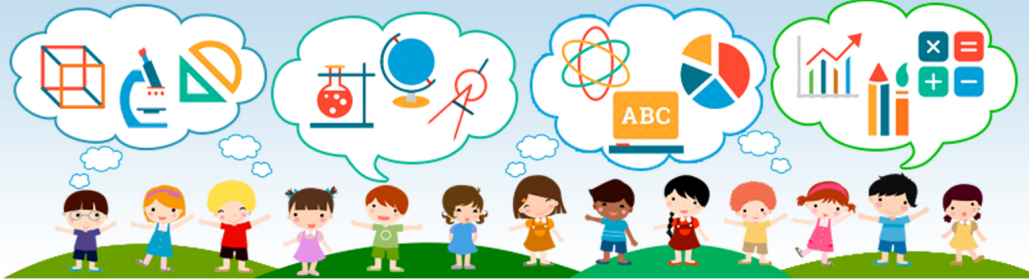
1. \_\_\_\_\_ - water that collects in the soil, sand and rocks below the Earth's surface



2. \_\_\_\_\_ - lines of equal atmospheric pressure on a weather map



3. \_\_\_\_\_ based on Units or



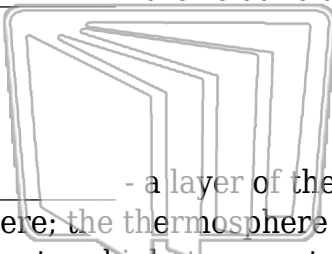
4. \_\_\_\_\_ out harm

5. \_\_\_\_\_ in the air specific t

**PREVIEW**

Please [Sign In](#) or [Sign Up](#) to download the printable version of this worksheet

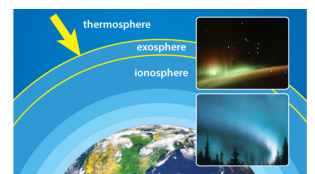
6. \_\_\_\_\_ - the relative amount of dissolved salt in a liquid solution



7. \_\_\_\_\_ - a layer of the Earth's atmosphere known as the upper atmosphere; the thermosphere is just above the mesosphere and is about 600 kilometers high; temperatures in this region can reach above 1000°C



8. \_\_\_\_\_ - the uppermost layer of the atmosphere where temperature increases with altitude; there are very few particles in this layer, but the particles move very rapidly due to the high temperature



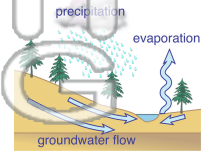


Name \_\_\_\_\_ Class \_\_\_\_\_ Date \_\_\_\_\_

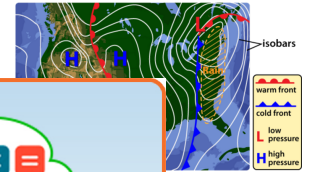
**Match each of the following terms to its definition:**

- Salinity
- Isobars
- Ground water
- Metric system
- Ozone layer
- Relative humidity
- Thermosphere
- Stratosphere

**1. ground water** - water that collects in the soil, sand and rocks below the Earth's surface



**2. isobars** - lines of equal atmospheric pressure on a weather map



**3. metric system**  
based on  
Units or

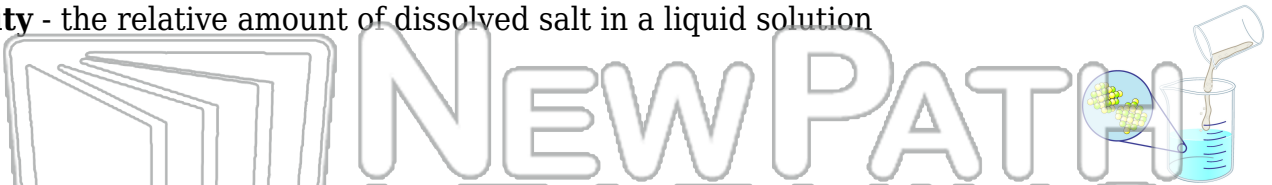


**4. ozone layer**  
out harm

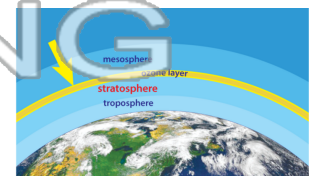
**5. relative humidity**  
vapor in  
at a spec

**PREVIEW**  
Please [Sign In](#) or [Sign Up](#) to download the printable version of this worksheet

**6. salinity** - the relative amount of dissolved salt in a liquid solution



**7. stratosphere** - a layer of the Earth's atmosphere known as the upper atmosphere; the thermosphere is just above the mesosphere and is about 600 kilometers high; temperatures in this region can reach above 1000°C



**8. thermosphere** - the uppermost layer of the atmosphere where temperature increases with altitude; there are very few particles in this layer, but the particles move very rapidly due to the high temperature

