

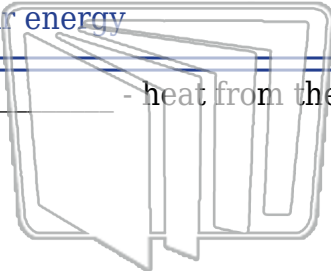


Name \_\_\_\_\_ Class \_\_\_\_\_ Date \_\_\_\_\_

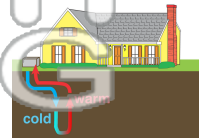
**Match each of the following terms to its definition:**

Resource	Natural gas	Renewable resource	Geothermal energy
Solar energy	Biomass	Nonrenewable resource	Solar panels

1. \_\_\_\_\_ - heat from the Earth



NEW PATH  
LEARNING



2. \_\_\_\_\_ - a natural resource that, once consumed, cannot be renewed in a relatively quick period of time



3. \_\_\_\_\_  
replenish



4. \_\_\_\_\_

5. \_\_\_\_\_

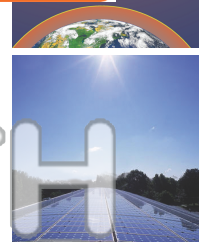
**PREVIEW**

Please [Sign In](#) or [Sign Up](#) to download the printable version of this worksheet

6. \_\_\_\_\_ - devices made to convert sunlight into electricity



NEW PATH  
LEARNING



7. \_\_\_\_\_ - a resource that is made out of plants and animals that died long ago; a nonrenewable fossil fuel



8. \_\_\_\_\_ - a fuel source composed of biological material, or materials from organisms that were once alive (for example, plants and trees, animal waste and food waste)



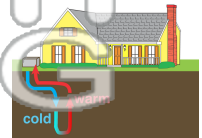
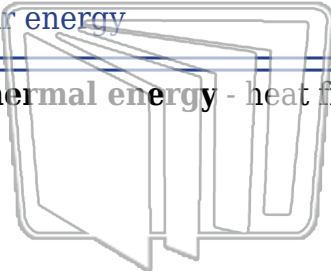


Name \_\_\_\_\_ Class \_\_\_\_\_ Date \_\_\_\_\_

**Match each of the following terms to its definition:**

Resource	Natural gas	Renewable resource	Geothermal energy
Solar energy	Biomass	Nonrenewable resource	Solar panels

1. **geothermal energy** - heat from the Earth



2. **nonrenewable resource** - a natural resource that, once consumed, cannot be renewed in a relatively quick period of time



3. **renewable resource** - a natural resource that can be replaced naturally in a relatively short period of time



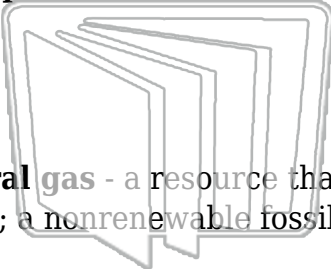
4. **resource** - a natural or man-made source of energy or materials

5. **solar energy** - energy from the sun

**PREVIEW**

Please [Sign In](#) or [Sign Up](#) to download the printable version of this worksheet

6. **solar panels** - devices made to convert sunlight into electricity



7. **natural gas** - a resource that is made out of plants and animals that died long ago; a nonrenewable fossil fuel



8. **biomass** - a fuel source composed of biological material, or materials from organisms that were once alive (for example, plants and trees, animal waste and food waste)

