



Name _____ Class _____ Date _____

Match each of the following terms to its definition:

Ovary

Imperfect flower

Endosperm

Anther

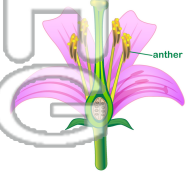
Ovule

Cross-pollination

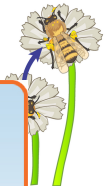
Embryo

Flower

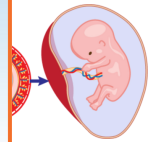
1. **anther** - the part of the flower that contains pollen that collects on bees and butterflies that land on the flower



2. **cross-pollination** - the transfer of pollen from the anther of one flower to the stigma of another flower



3. **embryo**
developn
fertilizat



4. **endos**

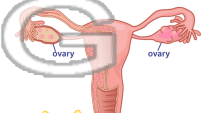
5. **flower**

PREVIEW
Please [Sign In](#) or [Sign Up](#) to download
the printable version of this worksheet

6. **imperfect flower** - a flower with only a stamen or a pistil, not both



7. **ovary** - the part of the flower that contains egg cells, where seeds form and turn into fruit; a female reproductive organ where eggs are produced



8. **ovule** - the part of the plant that becomes a fruit; a structure that houses an egg cell

