



Name _____ Class _____ Date _____

Match each of the following terms to its definition:

Anther

Seed coat

Cross-pollination

Perfect flower

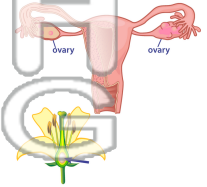
Ovule

Self-pollination

Sepal

Ovary

1. _____ - the part of the flower that contains egg cells, where seeds form and turn into fruit; a female reproductive organ where eggs are produced



2. _____ - the part of the plant that becomes a fruit; a structure that houses an egg cell

3. _____



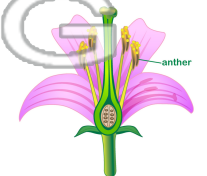
4. _____
seed un

5. _____
flower or

6. _____ - the structure of a plant that covers a developing flower bud in order to protect the bud while it grows

7. _____ - the part of the flower that contains pollen that collects on bees and butterflies that land on the flower

8. _____ - the transfer of pollen from the anther of one flower to the stigma of another flower





Name _____ Class _____ Date _____

Match each of the following terms to its definition:

Anther

Seed coat

Cross-pollination

Perfect flower

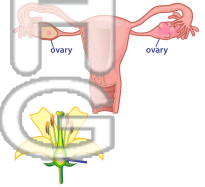
Ovule

Self-pollination

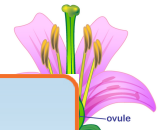
Sepal

Ovary

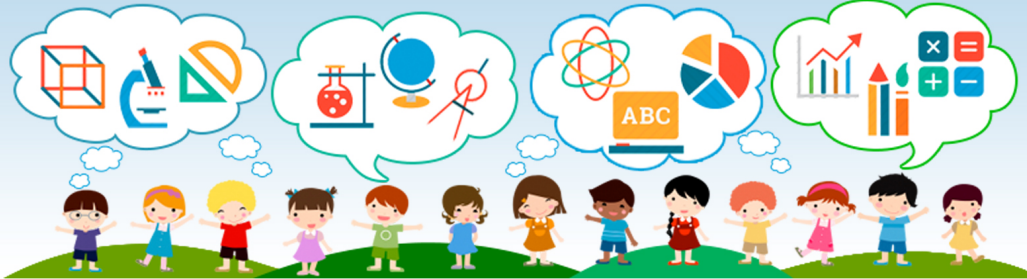
1. **ovary** - the part of the flower that contains egg cells, where seeds form and turn into fruit; a female reproductive organ where eggs are produced



2. **ovule** - the part of the plant that becomes a fruit; a structure that houses an egg cell



3. **perfect**



4. **seed coat**
until it is

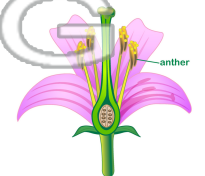
5. **self-pollination**
same flower
pollination

PREVIEW
Please [Sign In](#) or [Sign Up](#) to download
the printable version of this worksheet

6. **sepal** - the structure of a plant that covers a developing flower bud in order to protect the bud while it grows



7. **anther** - the part of the flower that contains pollen that collects on bees and butterflies that land on the flower



8. **cross-pollination** - the transfer of pollen from the anther of one flower to the stigma of another flower

