



Name _____ Class _____ Date _____

Match each of the following terms to its definition:

Growth hormones

Short-day plants

Gravitropism

Adaptation

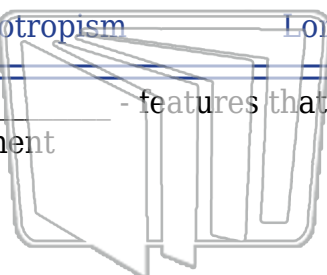
Phototropism

Long-day plants

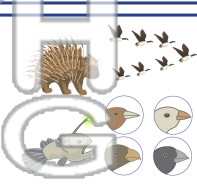
Thigmotropism

Succulents

1. _____ - features that help an organism survive in a particular environment



NEW PATH LEARNING



2. _____ - the growth of a plant in response to gravity



3. _____



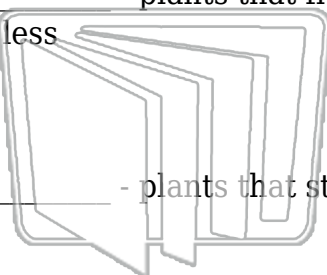
4. _____
sunlight

PREVIEW

Please [Sign In](#) or [Sign Up](#) to download the printable version of this worksheet



6. _____ - plants that flower only if they are exposed to daylight 12 hours or less



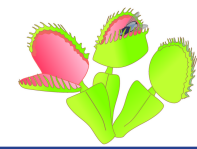
NEW PATH LEARNING



7. _____ - plants that store water in their stems and/or leaves



8. _____ - a plant's movement and growth in response to touch or contact with an object





Name _____ Class _____ Date _____

Match each of the following terms to its definition:

Growth hormones

Short-day plants

Gravitropism

Adaptation

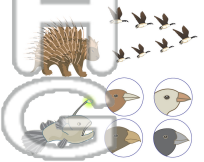
Phototropism

Long-day plants

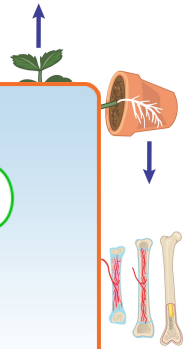
Thigmotropism

Succulents

1. **adaptation** - features that help an organism survive in a particular environment



2. **gravitropism** - the growth of a plant in response to gravity



3. **growth**



4. **long-day sunlight**

5. **phototropism**

PREVIEW
Please [Sign In](#) or [Sign Up](#) to download the printable version of this worksheet

6. **short-day plants** - plants that flower only if they are exposed to daylight 12 hours or less



7. **succulents** - plants that store water in their stems and/or leaves



8. **thigmotropism** - a plant's movement and growth in response to touch or contact with an object

