



Name _____ Class _____ Date _____

Match each of the following terms to its definition:

Hyphae

Moss

Phloem

Mollusk

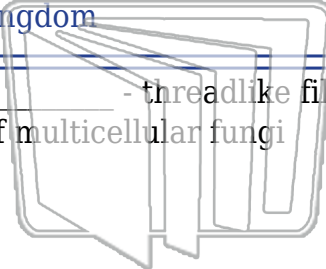
Kingdom

Mycelium

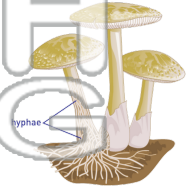
Multicellular organism

Invertebrate

1. _____ - threadlike filaments of branching cells that make up the bodies of multicellular fungi



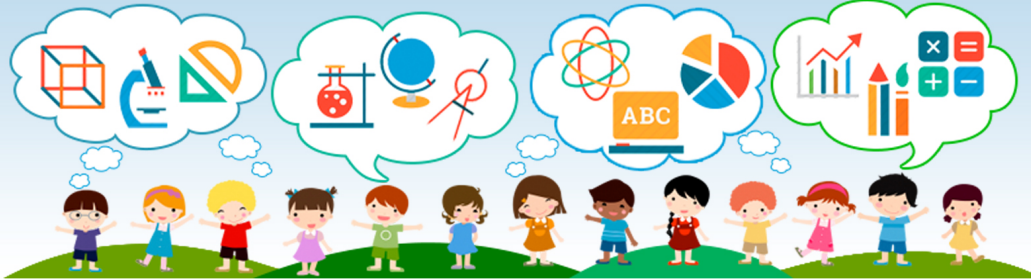
NEW PATH
LEARNING



2. _____ - animal that does not have a backbone; some of the major groups of invertebrates are cnidarians, arthropods, worms and mollusks



3. _____ and the t kingdom



4. _____ outer she example

5. _____

PREVIEW
Please [Sign In](#) or [Sign Up](#) to download the printable version of this worksheet

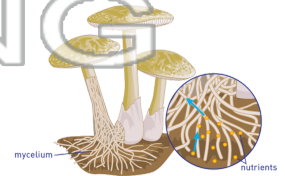
6. _____ - an organism made up of two or more cells



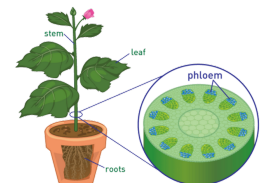
NEW PATH
LEARNING



7. _____ - a mass of fungal hyphae that absorbs nutrients



8. _____ - vascular tissue that transports organic nutrients to all parts of the plant





Name _____ Class _____ Date _____

Match each of the following terms to its definition:

Hyphae

Moss

Phloem

Mollusk

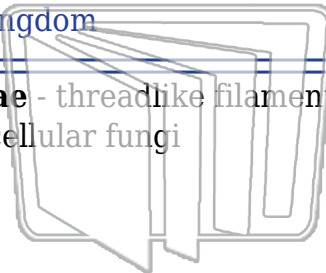
Kingdom

Mycelium

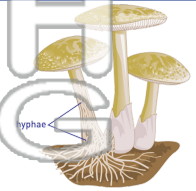
Multicellular organism

Invertebrate

1. **hyphae** - threadlike filaments of branching cells that make up the bodies of multicellular fungi



NEW PATH LEARNING



2. **invertebrate** - animal that does not have a backbone; some of the major groups of invertebrates are cnidarians, arthropods, worms and mollusks



3. **kingdom** - the taxonomic rank of animals,



4. **mollusk** - shell that snails and

5. **moss**

PREVIEW

Please [Sign In](#) or [Sign Up](#) to download the printable version of this worksheet

6. **multicellular organism** - an organism made up of two or more cells



NEW PATH LEARNING

7. **mycelium** - a mass of fungal hyphae that absorbs nutrients



8. **phloem** - vascular tissue that transports organic nutrients to all parts of the plant

