



Name \_\_\_\_\_ Class \_\_\_\_\_ Date \_\_\_\_\_

### Match each of the following terms to its definition:

Warm front

Tropical savanna

Tropical rainforest

Thunderstorm

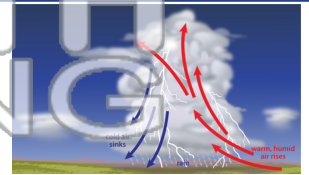
Tornado

Tropical zone

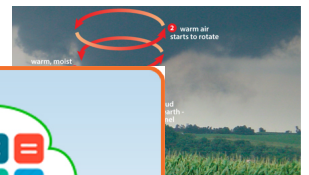
Tropical desert

Troposphere

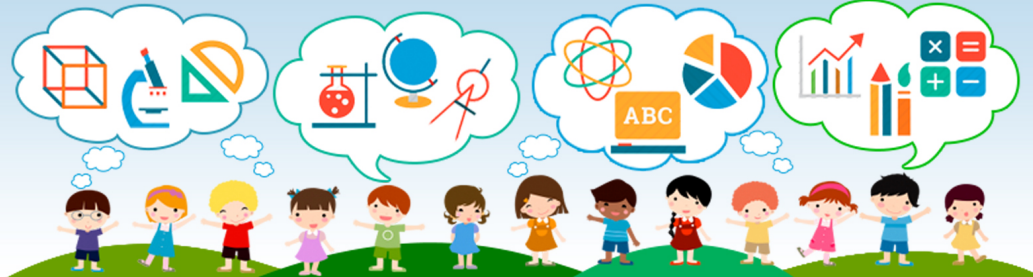
1. \_\_\_\_\_ - a small weather system that has intense energy which creates heavy rains, high winds and lightning



2. \_\_\_\_\_ - a highly destructive funnel shaped column of air that touches the ground; usually has stronger winds than a hurricane



3. \_\_\_\_\_ (cm/yr.), \_\_\_\_\_ (cm/yr.), and 120 \_\_\_\_\_



4. \_\_\_\_\_ and animals with high vegetation

on - low  
re - high  
ent poor



5. \_\_\_\_\_ (cm/yr.), a scattered

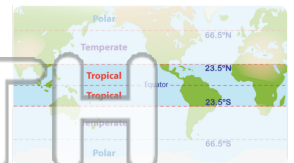
on - high  
re - high  
ent poor



moderate  
high  
poor



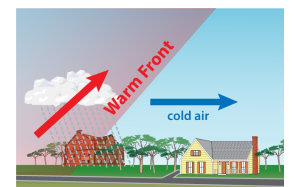
6. \_\_\_\_\_ - the climate zones between the equator and 23.5 degrees latitude north and south



7. \_\_\_\_\_ - the layer of the atmosphere in which you live; the densest atmospheric layer containing oxygen, nitrogen, carbon dioxide, water vapor, pollution and weather



8. \_\_\_\_\_ - the movement of the beginning edge of a mass of warm, moist air as it moves into a region; forms when a warm air mass bumps into a cold air mass that is not moving or is moving at a slow pace





Name \_\_\_\_\_ Class \_\_\_\_\_ Date \_\_\_\_\_

### Match each of the following terms to its definition:

Warm front

Tropical savanna

Tropical rainforest

Thunderstorm

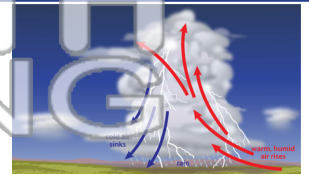
Tornado

Tropical zone

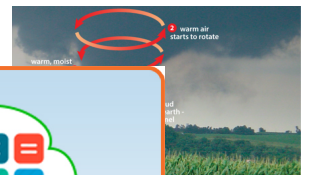
Tropical desert

Troposphere

1. **thunderstorm** - a small weather system that has intense energy which creates heavy rains, high winds and lightning



2. **tornado** - a highly destructive funnel shaped column of air that touches the ground; usually has stronger winds than a hurricane



3. **tropical rainforest** - a biome with high annual rainfall (200 cm/yr.), scattered trees and 120 species of trees

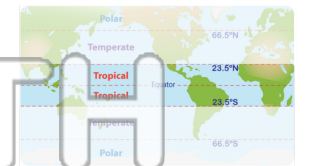
4. **tropical savanna** - a biome with scattered trees and tall grasses; annual rainfall is moderate (100 cm/yr.)

5. **tropical desert** - a biome with very little rainfall (less than 100 cm/yr.) and scattered trees

**PREVIEW**

Please [Sign In](#) or [Sign Up](#) to download the printable version of this worksheet

6. **tropical zone** - the climate zones between the equator and 23.5 degrees latitude north and south



7. **troposphere** - the layer of the atmosphere in which you live; the densest atmospheric layer containing oxygen, nitrogen, carbon dioxide, water vapor, pollution and weather



8. **warm front** - the movement of the beginning edge of a mass of warm, moist air as it moves into a region; forms when a warm air mass bumps into a cold air mass that is not moving or is moving at a slow pace

