



Name _____ Class _____ Date _____

Match each of the following terms to its definition:

Mitochondrion

Nucleolus

Organ

Nuclear membrane

Nuclear pores

Microscope

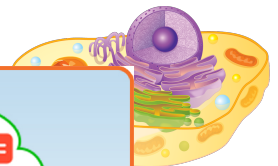
Nucleus

Nuclear envelope

1. _____ - a tool used by scientists to make small things appear larger so that they are easier to observe and study, an instrument that magnifies small objects



2. _____ - a rod-like organelle that converts the energy in food molecules to cellular energy through the process of cellular respiration



3. _____



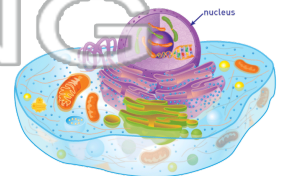
4. _____
chromosomes

5. _____
nucleus

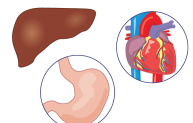
PREVIEW
Please [Sign In](#) or [Sign Up](#) to download the printable version of this worksheet

6. _____ - a large cellular structure within a nucleus that makes ribosomes

7. _____ - organelle that contains the genetic material (DNA) and serves as the control center of the cell



8. _____ - a structure made up of different types of tissues that work together to perform a certain function





Name _____ Class _____ Date _____

Match each of the following terms to its definition:

Mitochondrion

Nucleolus

Organ

Nuclear membrane

Nuclear pores

Microscope

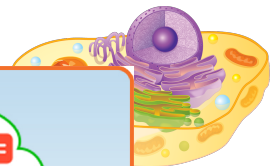
Nucleus

Nuclear envelope

1. **microscope** - a tool used by scientists to make small things appear larger so that they are easier to observe and study; an instrument that magnifies small objects



2. **mitochondrion** - a rod-like organelle that converts the energy in food molecules to cellular energy through the process of cellular respiration



3. **nucleus**

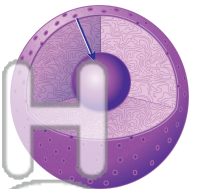


4. **nucleus** separate

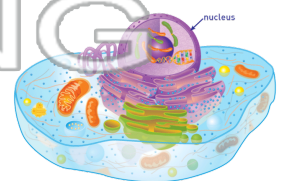
5. **nucleus** the nucleolus

PREVIEW
Please [Sign In](#) or [Sign Up](#) to download the printable version of this worksheet

6. **nucleolus** - a large cellular structure within a nucleus that makes ribosomes



7. **nucleus** - organelle that contains the genetic material (DNA) and serves as the control center of the cell



8. **organ** - a structure made up of different types of tissues that work together to perform a certain function

