



Name \_\_\_\_\_ Class \_\_\_\_\_ Date \_\_\_\_\_

### Match each of the following terms to its definition:

Cumulonimbus cloud

Doppler radar

Coriolis effect

Convection

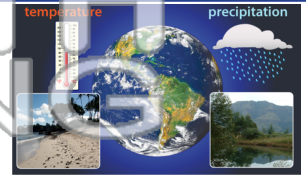
Cold front

Greenhouse effect

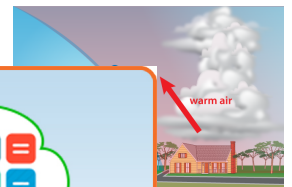
Cumulus clouds

Climate

1. \_\_\_\_\_ - the average weather of a region over an extended period of time



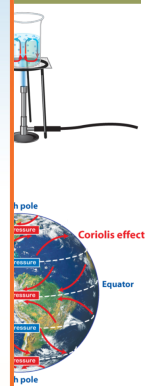
2. \_\_\_\_\_ - forms when a cold air mass bumps into a warm air mass that is not moving or is moving at a slow pace



3. \_\_\_\_\_



4. \_\_\_\_\_ rotation winds can



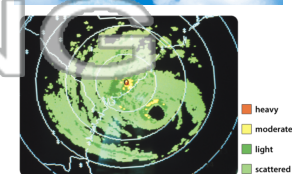
5. \_\_\_\_\_ thunders

Please [Sign In](#) or [Sign Up](#) to download the printable version of this worksheet

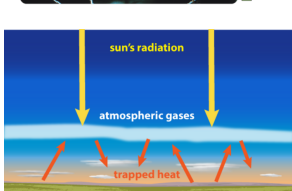
6. \_\_\_\_\_ - large puffy looking clouds typically associated with fair weather



7. \_\_\_\_\_ - a radar system that meteorologists use to track the location, movement and intensity of precipitation in a region



8. \_\_\_\_\_ - the natural process by which heat energy is held near the Earth's surface; the rise in temperature that the Earth experiences because certain gases in the atmosphere trap energy from the Sun





Name \_\_\_\_\_ Class \_\_\_\_\_ Date \_\_\_\_\_

**Match each of the following terms to its definition:**

Cumulonimbus cloud

Doppler radar

Coriolis effect

Convection

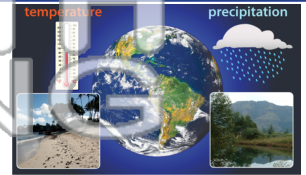
Cold front

Greenhouse effect

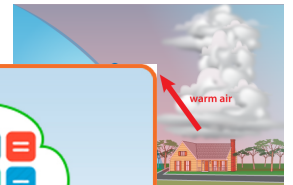
Cumulus clouds

Climate

1. **climate** - the average weather of a region over an extended period of time



2. **cold front** - forms when a cold air mass bumps into a warm air mass that is not moving or is moving at a slow pace

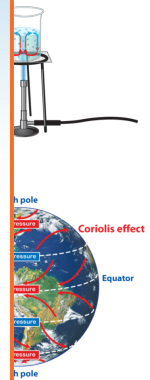


3. **convection**



**PREVIEW**

Please [Sign In](#) or [Sign Up](#) to download the printable version of this worksheet



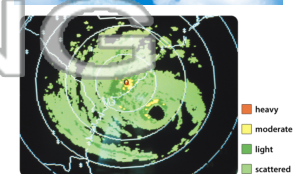
4. **Coriolis rotation** winds cause

5. **cumulonimbus** associated

6. **cumulus clouds** - large puffy looking clouds typically associated with fair weather



7. **Doppler radar** - a radar system that meteorologists use to track the location, movement and intensity of precipitation in a region



8. **greenhouse effect** - the natural process by which heat energy is held near the Earth's surface; the rise in temperature that the Earth experiences because certain gases in the atmosphere trap energy from the Sun

