



Name \_\_\_\_\_ Class \_\_\_\_\_ Date \_\_\_\_\_

### Match each of the following terms to its definition:

Metric system

Radiation balance

Precipitation

Ozone

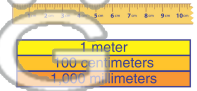
Ozone layer

Primary pollutant

Polar zone

Prevailing winds

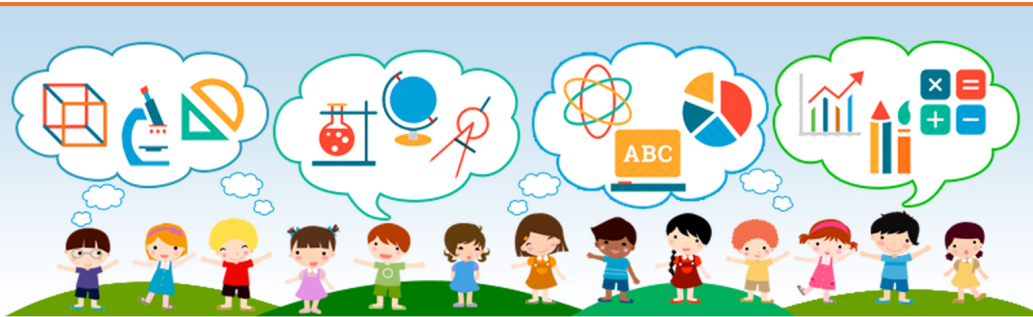
1. \_\_\_\_\_ - the internationally recognized system of measurements based on the number 10; it is also known as the International System of Units or simply SI



2. \_\_\_\_\_ - a molecule composed of three oxygen atoms



3. \_\_\_\_\_  
out harm



4. \_\_\_\_\_  
and sout

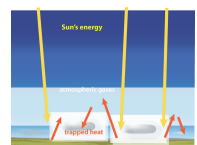
5. \_\_\_\_\_  
sleet, or

**PREVIEW**  
Please [Sign In](#) or [Sign Up](#) to download the printable version of this worksheet

6. \_\_\_\_\_ - winds that blow mostly from one direction in a particular geographical region

7. \_\_\_\_\_ - a pollutant, natural or human-made, that is put directly into the environment

8. \_\_\_\_\_ - the balance between the amount of electromagnetic radiation that comes into the Earth's atmosphere and the amount of heat that leaves the atmosphere





Name \_\_\_\_\_ Class \_\_\_\_\_ Date \_\_\_\_\_

**Match each of the following terms to its definition:**

Metric system

Radiation balance

Precipitation

Ozone

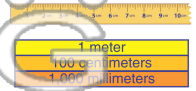
Ozone layer

Primary pollutant

Polar zone

Prevailing winds

**1. metric system** - the internationally recognized system of measurements based on the number 10; it is also known as the International System of Units or simply SI



**2. ozone** - a molecule composed of three oxygen atoms



**3. ozone**  
out harm

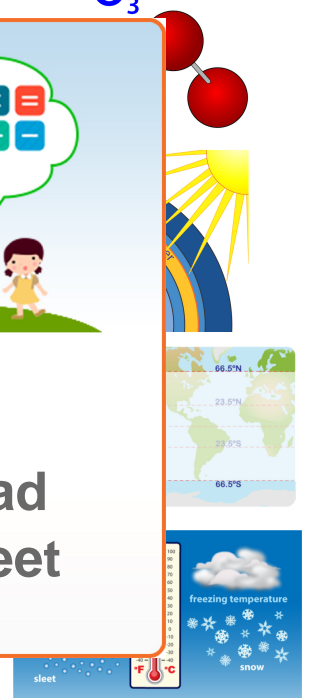


**4. polar**  
and south

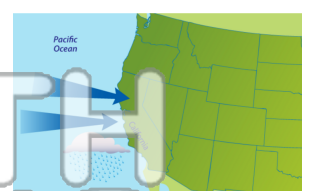
**PREVIEW**

Please [Sign In](#) or [Sign Up](#) to download the printable version of this worksheet

**5. precipi**  
sleet, or



**6. prevailing winds** - winds that blow mostly from one direction in a particular geographical region



**7. primary pollutant** - a pollutant, natural or human-made, that is put directly into the environment



**8. radiation balance** - the balance between the amount of electromagnetic radiation that comes into the Earth's atmosphere and the amount of heat that leaves the atmosphere

