



Name _____ Class _____ Date _____

Match each of the following terms to its definition:

Tropical desert

Tornado

Thermosphere

Thunderstorm

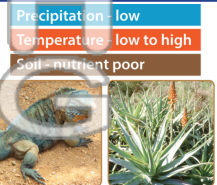
Tropical rainforest

Temperate desert

Temperate grassland

Temperate forest

1. _____ - a biome with a year-round dry climate, characterized by hot days and cool nights



2. _____ - a biome consisting of thick woods and rich soil; the climate drastically changes from summer to winter



3. _____ precipitation



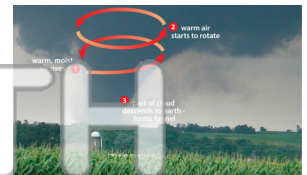
4. _____ increases particles

5. _____ creates h

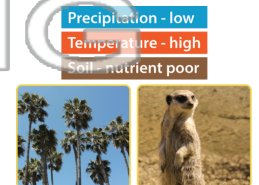
PREVIEW

Please [Sign In](#) or [Sign Up](#) to download the printable version of this worksheet

6. _____ - a highly destructive funnel shaped column of air that touches the ground; usually has stronger winds than a hurricane



7. _____ - the biome characterized by low precipitation (0 to 25 cm/yr.), soil poor in organic matter, and average temperatures between 60 and 120 degrees F



8. _____ - a very wet ecosystem where thousands of species of plants and animals live and the temperature is always warm and humid; a biome with high precipitation and hot temperatures, characterized by lush vegetation and nutrient-poor soil





Name _____ Class _____ Date _____

Match each of the following terms to its definition:

Tropical desert

Tornado

Thermosphere

Thunderstorm

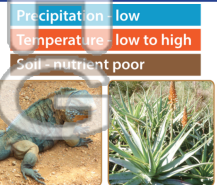
Tropical rainforest

Temperate desert

Temperate grassland

Temperate forest

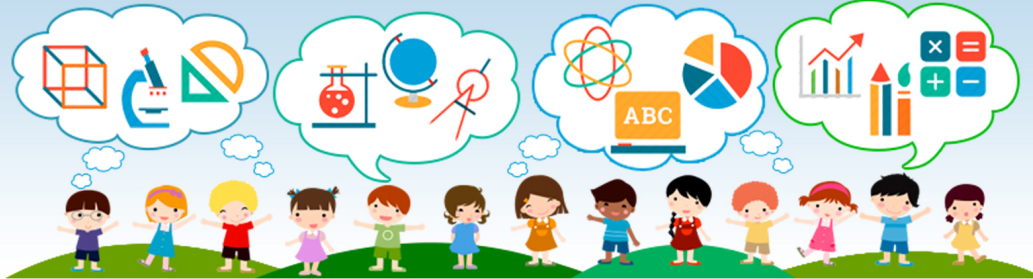
1. **temperate desert** - a biome with a year-round dry climate, characterized by hot days and cool nights



2. **temperate forest** - a biome consisting of thick woods and rich soil; the climate drastically changes from summer to winter



3. **temper...**
annual p...



4. **therm...**
temperat...
layer, bu...

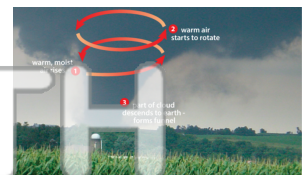
5. **thund...**
creates h...

PREVIEW
Please [Sign In](#) or [Sign Up](#) to download the printable version of this worksheet

6. **tornado** - a highly destructive funnel shaped column of air that touches the ground; usually has stronger winds than a hurricane



7. **tropical desert** - the biome characterized by low precipitation (0 to 25 cm/yr.), soil poor in organic matter, and average temperatures between 60 and 120 degrees F



8. **tropical rainforest** - a very wet ecosystem where thousands of species of plants and animals live and the temperature is always warm and humid; a biome with high precipitation and hot temperatures, characterized by lush vegetation and nutrient-poor soil

