



Name \_\_\_\_\_ Class \_\_\_\_\_ Date \_\_\_\_\_

### Match each of the following terms to its definition:

Fungi

Gymnosperm

Kingdom

Invertebrate

Pharyngeal slits

Heterotroph

Mycelium

Hyphae

1. \_\_\_\_\_ - a kingdom of scientific classification which includes organisms that are multicellular, have a nucleus, and need to obtain energy from other sources (for example - mushrooms)



2. \_\_\_\_\_ - group of vascular plants that develop seeds without a protective outer covering; they do not produce flowers or fruit



3. \_\_\_\_\_ food; also

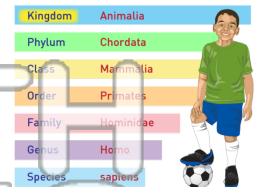


4. \_\_\_\_\_ bodies of

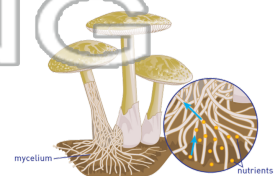
5. \_\_\_\_\_ groups of

**PREVIEW**  
Please [Sign In](#) or [Sign Up](#) to download the printable version of this worksheet

6. \_\_\_\_\_ - large category included in scientific classification system and the taxonomic category above phylum; scientists recognize six kingdoms: animals, plants, fungi, protista, eubacteria, and archaeobacteria



7. \_\_\_\_\_ - a mass of fungal hyphae that absorbs nutrients



8. \_\_\_\_\_ - structures that turn into gills in some species and disappear in others





Name \_\_\_\_\_ Class \_\_\_\_\_ Date \_\_\_\_\_

**Match each of the following terms to its definition:**

Fungi

Gymnosperm

Kingdom

Invertebrate

Pharyngeal slits

Heterotroph

Mycelium

Hyphae

**1. fungi** - a kingdom of scientific classification which includes organisms that are multicellular, have a nucleus, and need to obtain energy from other sources (for example - mushrooms)



**2. gymnosperm** - group of vascular plants that develop seeds without a protective outer covering; they do not produce flowers or fruit



**3. heterotroph** - organism that cannot make its own food; also called a consumer



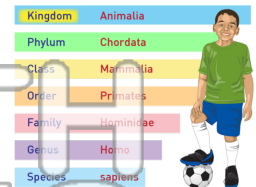
**4. hyphae** - thread-like structures of multicellular fungi that absorb nutrients



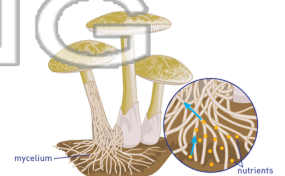
**5. invertebrate** - animal without a backbone



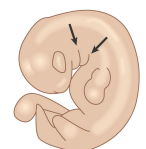
**6. kingdom** - large category included in scientific classification system and the taxonomic category above phylum; scientists recognize six kingdoms: animals, plants, fungi, protista, eubacteria, and archaeobacteria



**7. mycelium** - a mass of fungal hyphae that absorbs nutrients



**8. pharyngeal slits** - structures that turn into gills in some species and disappear in others



**PREVIEW**

Please [Sign In](#) or [Sign Up](#) to download the printable version of this worksheet