



Name _____ Class _____ Date _____

Match each of the following terms to its definition:

Cell plate

Codon

Chromatids

Centromere

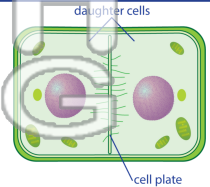
Crossing-over

Centriole

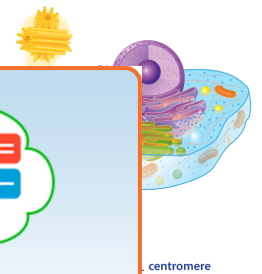
Dominant allele

Cytokinesis

1. _____ - develops in the middle plane of a plant cell separating it into two daughter cells during cell division



2. _____ - cylinder-shaped organelles found in animal cells which help to form the spindle fibers during cell division



3. _____ are held

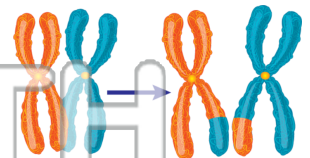


4. _____ of conde

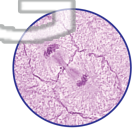
5. _____ code for

PREVIEW
Please [Sign In](#) or [Sign Up](#) to download the printable version of this worksheet

6. _____ - the exchange of DNA segments between homologous chromosomes; occurs in prophase I of meiosis



7. _____ - division of the cytoplasm following mitosis resulting into two identical copies of the original cell called daughter cells



8. _____ - an allele that will always be expressed as a trait





Name _____ Class _____ Date _____

Match each of the following terms to its definition:

Cell plate

Codon

Chromatids

Centromere

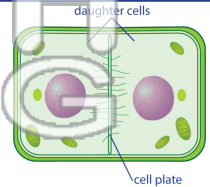
Crossing-over

Centriole

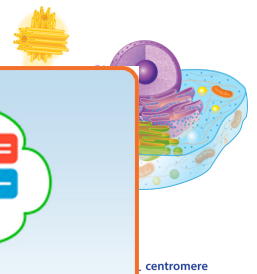
Dominant allele

Cytokinesis

1. **cell plate** - develops in the middle plane of a plant cell separating it into two daughter cells during cell division



2. **centriole** - cylinder-shaped organelles found in animal cells which help to form the spindle fibers during cell division



3. **centr**
held toge

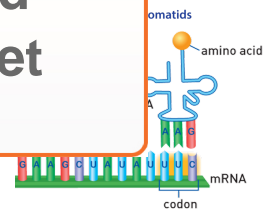


4. **chron**
of conde:

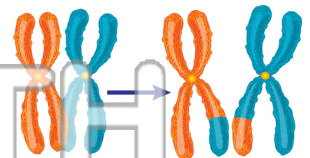
PREVIEW

Please [Sign In](#) or [Sign Up](#) to download the printable version of this worksheet

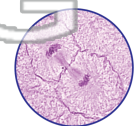
5. **codon**
the prod



6. **crossing-over** - the exchange of DNA segments between homologous chromosomes; occurs in prophase I of meiosis



7. **cytokinesis** - division of the cytoplasm following mitosis resulting into two identical copies of the original cell called daughter cells



8. **dominant allele** - an allele that will always be expressed as a trait

