



Name _____ Class _____ Date _____

Match each of the following terms to its definition:

Metaphase I

Meiosis

Mitosis

Metaphase II

Metaphase

Karyotype

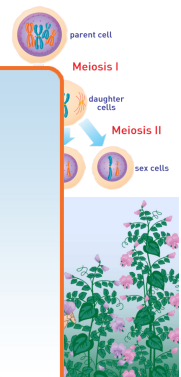
MRNA

Mendel, Gregor

1. _____ - a picture of the actual chromosomes of the organism, arranged in pairs



2. _____ - cellular process responsible for producing sex cells (egg and sperm) that contain half the number of chromosomes of the parent cell



3. _____
foundati

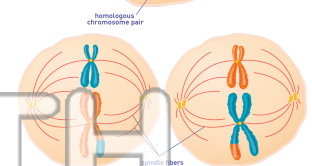


4. _____
double-s
spindle f

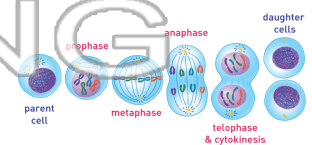
PREVIEW

Please [Sign In](#) or [Sign Up](#) to download the printable version of this worksheet

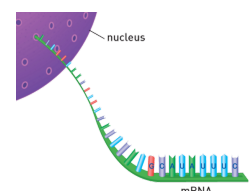
6. _____ - a phase of meiosis II during which the chromosomes line up in the center of the cell and spindle fibers attach to each centromere



7. _____ - a duplication process of cells responsible for growth and development, as well as replacing worn out cells throughout our bodies; the production of two genetically identical daughter cells



8. _____ - messenger ribonucleic acid; carries a code for producing proteins in the cell





Name _____ Class _____ Date _____

Match each of the following terms to its definition:

Metaphase I

Meiosis

Mitosis

Metaphase II

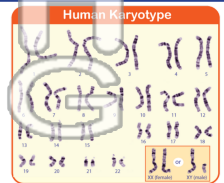
Metaphase

Karyotype

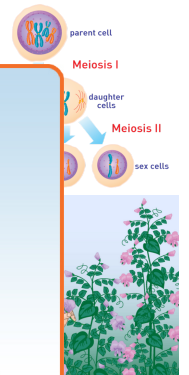
MRNA

Mendel, Gregor

1. **karyotype** - a picture of the actual chromosomes of the organism, arranged in pairs



2. **meiosis** - cellular process responsible for producing sex cells (egg and sperm) that contain half the number of chromosomes of the parent cell



3. **Mendel's** foundation

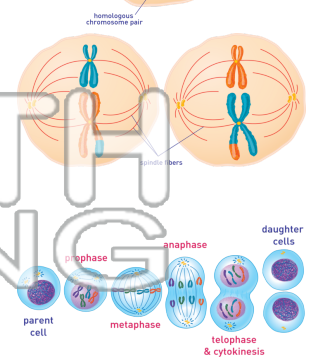


4. **metaphase I** - double-stranded chromosomes line up in the center of the cell and spindle fibers attach to each centromere

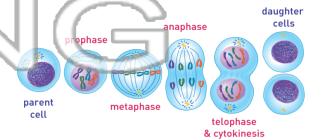
5. **metaphase II** - chromosomes line up in the center of the cell and spindle fibers attach to each centromere

PREVIEW
Please [Sign In](#) or [Sign Up](#) to download the printable version of this worksheet

6. **metaphase II** - a phase of meiosis II during which the chromosomes line up in the center of the cell and spindle fibers attach to each centromere



7. **mitosis** - a duplication process of cells responsible for growth and development, as well as replacing worn out cells throughout our bodies; the production of two genetically identical daughter cells



8. **mRNA** - messenger ribonucleic acid; carries a code for producing proteins in the cell

