



Name _____ Class _____ Date _____

Match each of the following terms to its definition:

Nucleus

MRNA

Mutation

Phenotype

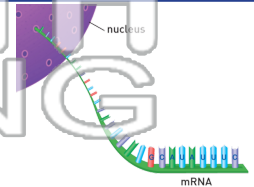
Nucleotide

Nuclear membrane

Multiple alleles

Nitrogen base

1. _____ - messenger ribonucleic acid; carries a code for producing proteins in the cell



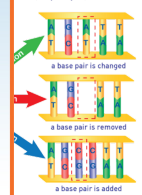
2. _____ - more than two alternate forms of a particular gene



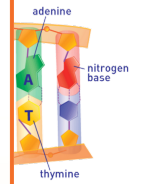
3. _____



Multiple alleles (I^A, I^B, i)



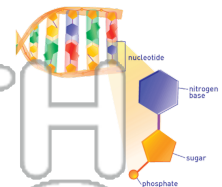
4. _____ DNA or RNA molecule



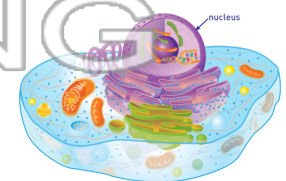
5. _____ chromosomes

PREVIEW
Please [Sign In](#) or [Sign Up](#) to download the printable version of this worksheet

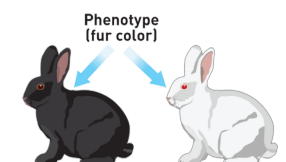
6. _____ - structural unit of DNA that consists of a sugar, phosphate, and nitrogen bases



7. _____ - organelle that contains the genetic material (DNA) and serves as the control center of the cell



8. _____ - the physical appearance of a particular organism





Name _____ Class _____ Date _____

Match each of the following terms to its definition:

Nucleus

mRNA

Mutation

Phenotype

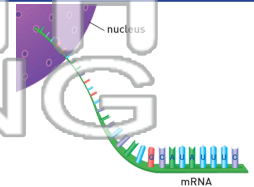
Nucleotide

Nuclear membrane

Multiple alleles

Nitrogen base

1. **mRNA** - messenger ribonucleic acid; carries a code for producing proteins in the cell



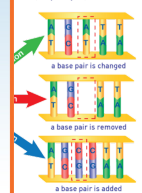
2. **multiple alleles** - more than two alternate forms of a particular gene



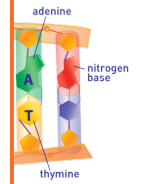
3. **muta**



Multiple alleles (I^A, I^B, i)



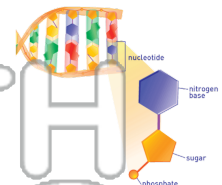
4. **nitrog**
DNA or R
molecule



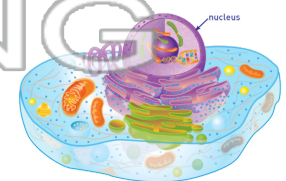
5. **nucle**
separate

PREVIEW
Please [Sign In](#) or [Sign Up](#) to download the printable version of this worksheet

6. **nucleotide** - structural unit of DNA that consists of a sugar, phosphate, and nitrogen bases



7. **nucleus** - organelle that contains the genetic material (DNA) and serves as the control center of the cell



8. **phenotype** - the physical appearance of a particular organism

