



Name \_\_\_\_\_ Class \_\_\_\_\_ Date \_\_\_\_\_

### Match each of the following terms to its definition:

Sexual reproduction

Sex cells

Replication

Ribosomes

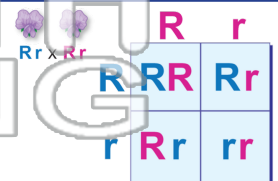
Spindle fibers

Recessive allele

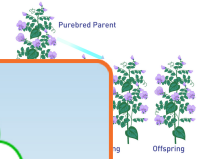
Purebred

Punnett square

1. \_\_\_\_\_ - a chart that shows the possible combinations of alleles that result from a genetic cross



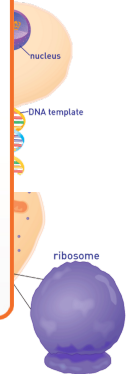
2. \_\_\_\_\_ - bred from parents of the same breed or variety



3. \_\_\_\_\_ present

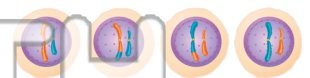


4. \_\_\_\_\_ nucleus

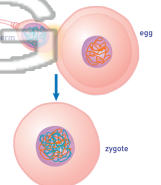


5. \_\_\_\_\_  
Please [Sign In](#) or [Sign Up](#) to download the printable version of this worksheet

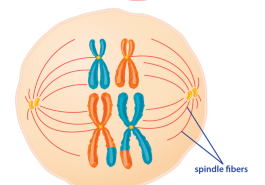
6. \_\_\_\_\_ - reproductive cell (eggs or sperm) which contain half the number of chromosomes of body cells; sperm produced in the testes by males, and eggs produced in the ovaries by females



7. \_\_\_\_\_ - a type of reproduction in which the genetic information from two sex cells combines to form a zygote



8. \_\_\_\_\_ - threadlike fibers that form during prophase and attach to chromosomes at the centromere to pull them apart during cell division





Name \_\_\_\_\_ Class \_\_\_\_\_ Date \_\_\_\_\_

### Match each of the following terms to its definition:

Sexual reproduction

Sex cells

Replication

Ribosomes

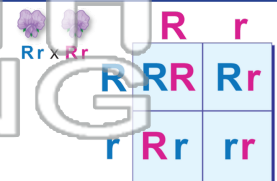
Spindle fibers

Recessive allele

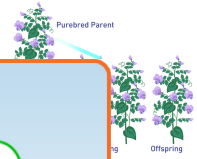
Purebred

Punnett square

1. **Punnett square** - a chart that shows the possible combinations of alleles that result from a genetic cross



2. **purebred** - bred from parents of the same breed or variety



3. **recessive**  
present

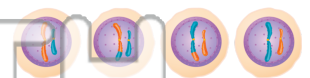


4. **replic**  
nucleus

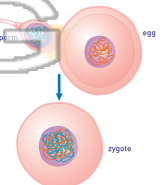
## PREVIEW

Please [Sign In](#) or [Sign Up](#) to download the printable version of this worksheet

6. **sex cells** - reproductive cell (eggs or sperm) which contain half the number of chromosomes of body cells; sperm produced in the testes by males, and eggs produced in the ovaries by females



7. **sexual reproduction** - a type of reproduction in which the genetic information from two sex cells combines to form a zygote



8. **spindle fibers** - threadlike fibers that form during prophase and attach to chromosomes at the centromere to pull them apart during cell division

